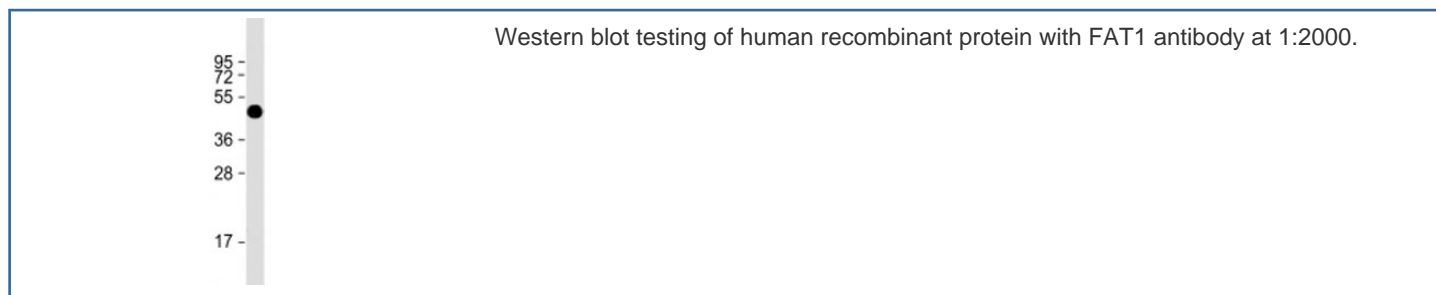


FAT1 Antibody [clone 1634CT464.1.9] (F53813)

Catalog No.	Formulation	Size
F53813-0.2ML	In 1X PBS, pH 7.4, with 0.09% sodium azide	0.2 ml
F53813-0.05ML	In 1X PBS, pH 7.4, with 0.09% sodium azide	0.05 ml

[Bulk quote request](#)

Availability	1-3 business days
Species Reactivity	Human
Format	Purified
Clonality	Monoclonal (mouse origin)
Isotype	Mouse IgG1, kappa
Clone Name	1634CT464.1.9
Purity	Protein G affinity chromatography
UniProt	Q14517
Applications	Western Blot : 1:1000-2000
Limitations	This FAT1 antibody is available for research use only.



Description

FAT tumor suppressor 1 plays an essential role for cellular polarization, directed cell migration and modulating cell-cell contact.

Application Notes

Titration of the FAT1 antibody may be required due to differences in protocols and substrate sensitivity.

Immunogen

A human recombinant protein of amino acids 4203-4539 was used as the immunogen for the FAT1 antibody.

Storage

Aliquot the FAT1 antibody and store frozen at -20°C or colder. Avoid repeated freeze-thaw cycles.