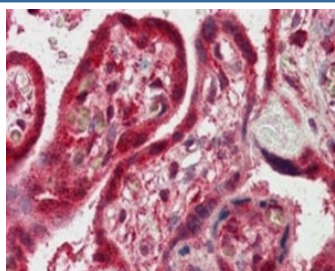


FAPP2 Antibody (R33485)

Catalog No.	Formulation	Size
R33485-100UG	0.5 mg/ml in 1X TBS, pH7.3, with 0.5% BSA (US sourced) and 0.02% sodium azide	100 ug

[Bulk quote request](#)

Availability	1-3 business days
Species Reactivity	Human
Format	Antigen affinity purified
Host	Goat
Clonality	Polyclonal (goat origin)
Isotype	Goat Ig
Purity	Antigen affinity
Gene ID	84725
Applications	Immunohistochemistry (FFPE) : 2-4ug/ml ELISA (peptide) LOD : 1:64000
Limitations	This FAPP2 antibody is available for research use only.



IHC testing of FFPE human placenta with FAPP2 antibody at 2.5ug/ml. HIER: steamed with pH6 citrate buffer, AP-staining.

Description

Additional name(s) for this target protein: Pleckstrin homology domain containing, family A member 8; PLEKHA8

Application Notes

Optimal dilution of the FAPP2 antibody should be determined by the researcher.

Immunogen

Amino acids DIQTALRNPTENT were used as the immunogen for this FAPP2 antibody.

Storage

Aliquot and store the FAPP2 antibody at -20oC.