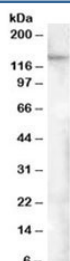


FAM62A Antibody (R35330)

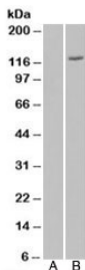
Catalog No.	Formulation	Size
R35330-100UG	0.5 mg/ml in 1X TBS, pH7.3, with 0.5% BSA (US sourced) and 0.02% sodium azide	100 ug

[Bulk quote request](#)

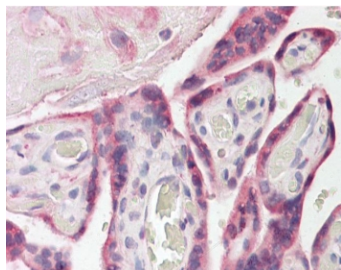
Availability	1-3 business days
Species Reactivity	Human
Predicted Reactivity	Mouse, Rat, Dog, Cow
Format	Antigen affinity purified
Clonality	Polyclonal (goat origin)
Isotype	Goat Ig
Purity	Antigen affinity
Gene ID	23344
Localization	Cell membrane, cytoplasm (ER)
Applications	Western Blot : 0.5-2ug/ml IHC (FFPE) : 3.75ug/ml ELISA (peptide) LOD : 1:8000
Limitations	This FAM62A antibody is available for research use only.



Western blot testing of human adipose lysate with FAM62A antibody at 0.5ug/ml.
Predicted molecular weight: ~123 kDa, observed here at ~150 kDa.



Western blot of HEK293 lysate overexpressing FAM62A probed with FAM62A antibody (mock transfection in lane 1). Predicted molecular weight: ~123 kDa.



IHC testing of FFPE human placenta tissue with FAM62A antibody at 3.75ug/ml. Required HIER: steamed antigen retrieval with pH6 citrate buffer; AP-staining.

Description

Additional name(s) for this target protein: Family with sequence similarity 62 member A

Application Notes

Optimal dilution of the FAM62A antibody should be determined by the researcher.

Immunogen

Amino acids QKKRTLSPEFNER were used as the immunogen for this FAM62A antibody.

Storage

Aliquot and store the FAM62A antibody at -20oC.