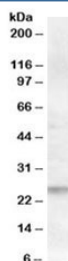


FAIM1 Antibody (R34503)

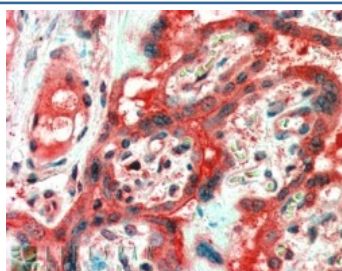
Catalog No.	Formulation	Size
R34503-100UG	0.5 mg/ml in 1X TBS, pH7.3, with 0.5% BSA (US sourced) and 0.02% sodium azide	100 ug

[Bulk quote request](#)

Availability	1-3 business days
Species Reactivity	Human
Predicted Reactivity	Dog, Mouse, Rat
Format	Antigen affinity purified
Clonality	Polyclonal (goat origin)
Isotype	Goat Ig
Purity	Antigen affinity
Gene ID	55179
Applications	Western Blot : 0.5-1ug/ml Immunohistochemistry (FFPE) : 2-3ug/ml ELISA (peptide) LOD : 1:32000
Limitations	This FAIM1 antibody is available for research use only.



Western blot testing of human lymph node lysate with FAIM1 antibody at 0.5ug/ml.
Predicted/observed molecular weight: ~25kDa.



IHC staining of FFPE human placenta with FAIM1 antibody at 2.5ug/ml. HIER: steamed with pH6 citrate buffer, AP-staining.

Description

Additional name(s) for this target protein: Fas apoptotic inhibitory molecule 1; FAIM

Application Notes

Optimal dilution of the FAIM1 antibody should be determined by the researcher.

Immunogen

Amino acids KKYMEDRSKTTN were used as the immunogen for this FAIM1 antibody.

Storage

Aliquot and store the FAIM1 antibody at -20oC.