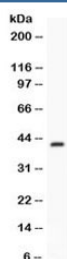


Factor D Antibody / CFD (R31875)

Catalog No.	Formulation	Size
R31875	0.5mg/ml if reconstituted with 0.2ml sterile DI water	100 ug

Bulk quote request

Availability	1-3 business days
Species Reactivity	Mouse
Format	Antigen affinity purified
Clonality	Polyclonal (rabbit origin)
Isotype	Rabbit IgG
Purity	Antigen affinity
Buffer	Lyophilized from 1X PBS with 2.5% BSA and 0.025% sodium azide
UniProt	P03953
Applications	Western Blot : 0.1-0.5ug/ml
Limitations	This Factor D antibody is available for research use only.



Western blot testing of mouse spleen lysate with Factor D antibody. Predicted molecular weight ~27 kDa, observed here at ~43 kDa.

Description

Complement Factor D is a protein which in humans is encoded by the CFD gene. The protein encoded by this gene is a member of the trypsin family of peptidases. The encoded protein is a component of the alternative complement pathway best known for its role in humoral suppression of infectious agents. It is also a serine protease that is secreted by adipocytes into the bloodstream. And it stimulates glucose transport for triglyceride accumulation in fats cells and inhibits lipolysis. Finally, the encoded protein has a high level of expression in fat, suggesting a role for adipose tissue in immune system biology.

Application Notes

Optimal dilution of the Factor D antibody should be determined by the researcher.

Immunogen

Amino acids 30-235 of mouse Factor D were used as the immunogen for the Factor D antibody.

Storage

After reconstitution, the Factor D antibody can be stored for up to one month at 4oC. For long-term, aliquot and store at -20oC. Avoid repeated freezing and thawing.