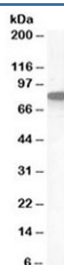


Ezrin Antibody / EZR (R35231)

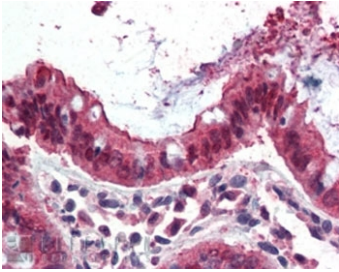
Catalog No.	Formulation	Size
R35231-100UG	0.5 mg/ml in 1X TBS, pH7.3, with 0.5% BSA (US sourced) and 0.02% sodium azide	100 ug

[Bulk quote request](#)

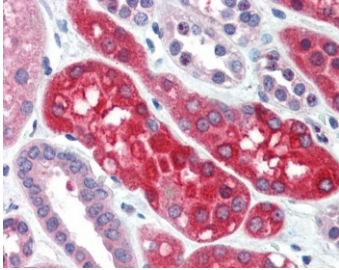
Availability	1-3 business days
Species Reactivity	Human
Predicted Reactivity	Dog
Format	Antigen affinity purified
Host	Goat
Clonality	Polyclonal (goat origin)
Isotype	Goat Ig
Purity	Antigen affinity
Gene ID	7430
Localization	Cytoplasmic, membranous
Applications	Western Blot : 1-3ug/ml Immunohistochemistry (FFPE) : 3-5ug/ml ELISA (peptide) LOD : 1:16000
Limitations	This Ezrin antibody is available for research use only.



Western blot testing of human placenta lysate with Ezrin antibody at 1ug/ml. Predicted molecular weight 70~80 kDa.



IHC staining of FFPE human small intestine with Ezrin antibody at 4ug/ml. HIER: steamed with pH6 citrate buffer, AP-staining.



IHC staining of FFPE human kidney with Ezrin antibody at 4ug/ml. HIER: steamed with pH6 citrate buffer, AP-staining.

Description

Additional name(s) for this target protein: Villin 2, VIL2, CVIL, CVL

Application Notes

Optimal dilution of the Ezrin antibody should be determined by the researcher.

Immunogen

Amino acids QDYEEKTKKAER were used as the immunogen for this Ezrin antibody.

Storage

Aliquot and store the Ezrin antibody at -20oC.