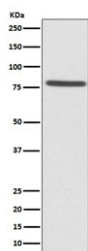


EZR Antibody / Ezrin [clone AAI-5] (RQ5446)

Catalog No.	Formulation	Size
RQ5446	Antibody in PBS with 0.02% sodium azide, 50% glycerol and 0.4-0.5mg/ml BSA	100 ul

[Bulk quote request](#)

Availability	1-2 weeks
Species Reactivity	Human
Format	Purified
Clonality	Rabbit Monoclonal
Isotype	Rabbit IgG
Clone Name	AAAI-5
Purity	Affinity purified
UniProt	P15311
Applications	Western Blot : 1:500-1:2000
Limitations	This Ezrin antibody is available for research use only.



Western blot testing of human HeLa cell lysate with Ezrin antibody. Expected molecular weight: 70-80 kDa.

Description

The cytoplasmic peripheral membrane protein encoded by the EZR gene functions as a protein-tyrosine kinase substrate in microvilli. As a member of the ERM protein family, this protein serves as an intermediate between the plasma membrane and the actin cytoskeleton. This protein plays a key role in cell surface structure adhesion, migration and organization, and it has been implicated in various human cancers. [RefSeq]

Application Notes

Optimal dilution of the Ezrin antibody should be determined by the researcher.

Immunogen

A synthetic peptide specific to human Ezrin / EZR was used as the immunogen for the Ezrin antibody.

Storage

Store the Ezrin antibody at -20oC.