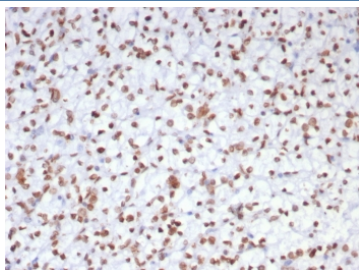


EZH2 Antibody / Enhancer of zeste homolog 2 [clone EZH2/7507] (V5234)

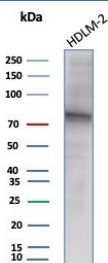
Catalog No.	Formulation	Size
V5234-100UG	0.2 mg/ml in 1X PBS with 0.1 mg/ml BSA (US sourced), 0.05% sodium azide	100 ug
V5234-20UG	0.2 mg/ml in 1X PBS with 0.1 mg/ml BSA (US sourced), 0.05% sodium azide	20 ug
V5234SAF-100UG	1 mg/ml in 1X PBS; BSA free, sodium azide free	100 ug

Bulk quote request

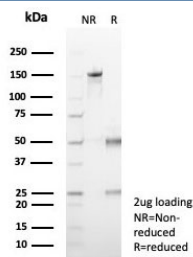
Availability	1-3 business days
Species Reactivity	Human
Format	Purified
Host	Mouse
Clonality	Monoclonal (mouse origin)
Isotype	Mouse IgG1, kappa
Clone Name	EZH2/7507
Purity	Protein A/G affinity
UniProt	Q15910
Localization	Nucleus
Applications	Western Blot : 1-2ug/ml Immunohistochemistry (FFPE) : 1-2ug/ml for 30 min at RT
Limitations	This EZH2 antibody is available for research use only.



IHC staining of FFPE human renal cell carcinoma tissue with EZH2 antibody (clone EZH2/7507). HIER: boil tissue sections in pH 9 10mM Tris with 1mM EDTA for 20 min and allow to cool before testing.



Western blot testing of human HDLM-2 cell lysate with EZH2 antibody (clone EZH2/7507). Predicted molecular weight: 85-95 kDa.



SDS-PAGE analysis of purified, BSA-free EZH2 antibody (clone EZH2/7507) as confirmation of integrity and purity.

Description

This gene encodes a member of the Polycomb-group (PcG) family. PcG family members form multimeric protein complexes, which are involved in maintaining the transcriptional repressive state of genes over successive cell generations. This protein associates with the embryonic ectoderm development protein, the VAV1 oncoprotein, and the X-linked nuclear protein. This protein may play a role in the hematopoietic and central nervous systems. Multiple alternatively spliced transcript variants encoding distinct isoforms have been identified for this gene.

Application Notes

Optimal dilution of the EZH2 antibody should be determined by the researcher.

Immunogen

A recombinant partial protein sequence (within amino acids 300-550) from the human protein was used as the immunogen for the EZH2 antibody.

Storage

Aliquot the EZH2 antibody and store frozen at -20°C or colder. Avoid repeated freeze-thaw cycles.