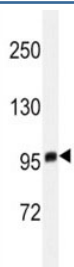


## EZH2 Antibody [clone 144CT2.1.1.5] (F40221)

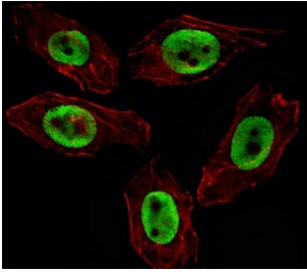
Catalog No.	Formulation	Size
F40221-0.4ML	In 1X PBS, pH 7.4, with 0.09% sodium azide	0.4 ml
F40221-0.08ML	In 1X PBS, pH 7.4, with 0.09% sodium azide	0.08 ml

[Bulk quote request](#)

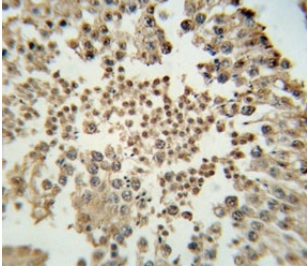
<b>Availability</b>	1-3 business days
<b>Species Reactivity</b>	Human
<b>Predicted Reactivity</b>	Primate
<b>Format</b>	Purified
<b>Host</b>	Mouse
<b>Clonality</b>	Monoclonal (mouse origin)
<b>Isotype</b>	Mouse IgG1, k
<b>Clone Name</b>	144CT2.1.1.5
<b>Purity</b>	Purified
<b>UniProt</b>	Q15910
<b>Applications</b>	Immunofluorescence : 1:10-1:50 Western Blot : 1:100-1:500 IHC (Paraffin) : 1:10-1:50
<b>Limitations</b>	This EZH2 antibody is available for research use only.



EZH2 Antibody T47D Cell WB. Western blot analysis of EZH2 antibody in T47D lysate.  
Predicted size: 85-95 kDa.



EZH2 Antibody U251 Cell IF. Fluorescent image of U251 cell stained with EZH2 antibody (green). Immunoreactivity is localized to the nucleus.



EZH2 Antibody Testis IHC. EZH2 antibody immunohistochemistry analysis in formalin fixed and paraffin embedded human testis tissue.

## Description

EZH2 Antibody detects Enhancer of zeste homolog 2, a member of the Polycomb-group (PcG) family. PcG family members form multimeric protein complexes, which are involved in maintaining the transcriptional repressive state of genes over successive cell generations. EZH2 associates with the embryonic ectoderm development protein, the VAV1 oncoprotein, and the X-linked nuclear protein. This protein may play a role in the hematopoietic and central nervous systems. Two transcript variants encoding distinct isoforms have been identified for this gene.

For comprehensive detection of EZH2 in epigenetic regulation and PRC2 complex studies, see our [EZH2 antibody \(clone EZH2/2536\)](#).

## Application Notes

Titration of the EZH2 antibody may be required due to differences in protocols and secondary/substrate sensitivity.

## Immunogen

This EZH2 antibody was produced from a mouse immunized with EZH2 recombinant protein.

## Storage

Aliquot the EZH2 antibody and store frozen at -20°C or colder. Avoid repeated freeze-thaw cycles.