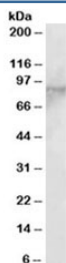


## EZH1 Antibody (R33807)

Catalog No.	Formulation	Size
R33807-100UG	0.5 mg/ml in 1X TBS, pH7.3, with 0.5% BSA (US sourced) and 0.02% sodium azide	100 ug

[Bulk quote request](#)

Availability	1-3 business days
Species Reactivity	Human
Predicted Reactivity	Cow, Mouse
Format	Antigen affinity purified
Host	Goat
Clonality	Polyclonal (goat origin)
Isotype	Goat Ig
Purity	Antigen affinity
Gene ID	2145
Applications	Western Blot : 2-6ug/ml ELISA (peptide) LOD : 1:2000
Limitations	This EZH1 antibody is available for research use only.



Western blot testing of MOLT4 lysate with EZH1 antibody at 2ug/ml. Predicted molecular weight ~85kDa.

## Description

Additional name(s) for this target protein: Enhancer of zeste homolog 1

## Application Notes

Optimal dilution of the EZH1 antibody should be determined by the researcher.

## Immunogen

Amino acids EIPNPPTSKCITY were used as the immunogen for this EZH1 antibody.

## Storage

Aliquot and store the EZH1 antibody at -20oC.