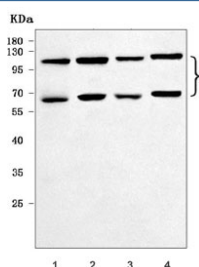


EZH1 Antibody / Enhancer of zeste homolog 1 (RQ7773)

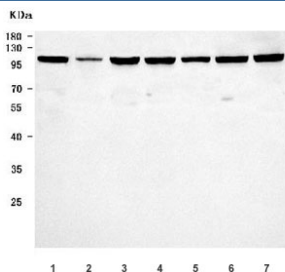
Catalog No.	Formulation	Size
RQ7773	0.5mg/ml if reconstituted with 0.2ml sterile DI water	100 ug

Bulk quote request

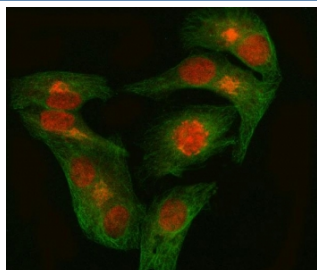
Availability	1-3 business days
Species Reactivity	Human, Mouse, Rat
Format	Antigen affinity purified
Clonality	Polyclonal (rabbit origin)
Isotype	Rabbit IgG
Purity	Antigen affinity purified
Buffer	Lyophilized from 1X PBS with 2% Trehalose
UniProt	Q92800
Localization	Nuclear
Applications	Western Blot : 0.5-1ug/ml Immunofluorescence : 5ug/ml Flow Cytometry : 1-3ug/million cells Direct ELISA : 0.1-0.5ug/ml
Limitations	This EZH1 antibody is available for research use only.



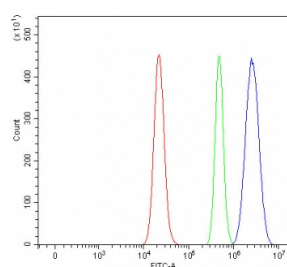
Western blot testing of 1) rat testis, 2) rat C6, 3) mouse testis and 4) mouse NIH 3T3 cell lysate with EZH1 antibody. Predicted molecular weight: 69-86 kDa (multiple isoforms).



Western blot testing of human 1) HepG2, 2) HL60, 3) 293T, 4) Daudi, 5) HaCaT, 6) HeLa and 7) MOLT4 cell lysate with EZH1 antibody. Predicted molecular weight: 69-86 kDa (multiple isoforms).



Immunofluorescent staining of FFPE human HeLa cells with GNB1 antibody (red) and Alpha Tubulin mAb (green). HIER: steam section in pH6 citrate buffer for 20 min.



Flow cytometry testing of human RT4 cells with EZH1 antibody at 1ug/million cells (blocked with goat sera); Red=cells alone, Green=isotype control, Blue= EZH1 antibody.

Description

Histone-lysine N-methyltransferase EZH1 is an enzyme that in humans is encoded by the EZH1 gene. EZH1 is a component of a noncanonical Polycomb repressive complex-2 (PRC2) that mediates methylation of histone H3 (see MIM 602812) lys27 (H3K27) and functions in the maintenance of embryonic stem cell pluripotency and plasticity.

Application Notes

Optimal dilution of the EZH1 antibody should be determined by the researcher.

Immunogen

E. coli-derived recombinant human protein (amino acids R27-E485) was used as the immunogen for the EZH1 antibody.

Storage

After reconstitution, the EZH1 antibody can be stored for up to one month at 4°C. For long-term, aliquot and store at -20°C. Avoid repeated freezing and thawing.

