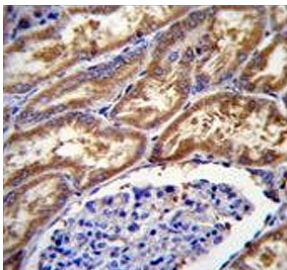


EXOC3L1 Antibody / Exocyst complex component 3-like protein (F54586)

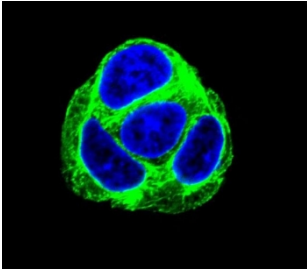
Catalog No.	Formulation	Size
F54586-0.4ML	In 1X PBS, pH 7.4, with 0.09% sodium azide	0.4 ml
F54586-0.08ML	In 1X PBS, pH 7.4, with 0.09% sodium azide	0.08 ml

[Bulk quote request](#)

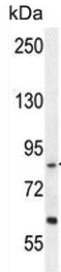
Availability	1-3 business days
Species Reactivity	Human, Mouse
Format	Purified
Host	Rabbit
Clonality	Polyclonal (rabbit origin)
Isotype	Rabbit Ig
Purity	Antigen affinity purified
UniProt	Q86V11
Localization	Cytoplasmic
Applications	Immunofluorescence : 1:25 Immunohistochemistry (FFPE) : 1:25 Western Blot : 1:500-1:2000
Limitations	This EXOC3L1 antibody is available for research use only.



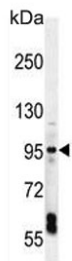
IHC testing of FFPE human kidney tissue with EXOC3L1 antibody. HIER: steam section in pH6 citrate buffer for 20 min and allow to cool prior to staining.



Immunofluorescent staining of human HepG2 cells with EXOC3L1 antibody (green) and DAPI nuclear stain (blue).



Western blot testing of human HepG2 cell lysate with EXOC3L1 antibody. Predicted molecular weight ~82 kDa.



Western blot testing of mouse liver tissue lysate with EXOC3L1 antibody. Predicted molecular weight ~82 kDa.

Description

As part of the exocyst, may play a role in regulated exocytosis of insulin granules. [UniProt]

Application Notes

The stated application concentrations are suggested starting points. Titration of the EXOC3L1 antibody may be required due to differences in protocols and secondary/substrate sensitivity.

Immunogen

A portion of amino acids 652-680 from the human protein was used as the immunogen for the EXOC3L1 antibody.

Storage

Aliquot the EXOC3L1 antibody and store frozen at -20°C or colder. Avoid repeated freeze-thaw cycles.