

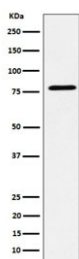
## EXOC3 Antibody / Exocyst complex component 3 [clone 29E26] (RQ8798)

Catalog No.	Formulation	Size
RQ8798	Antibody in PBS with 0.02% sodium azide, 50% glycerol and 0.4-0.5mg/ml BSA	100 ul

Recombinant RABBIT MONOCLONAL

[Bulk quote request](#)

Availability	1-3 days
Species Reactivity	Human
Format	Purified
Clonality	Recombinant Rabbit Monoclonal
Isotype	Rabbit IgG
Clone Name	29E26
Purity	Affinity chromatography
UniProt	O60645
Applications	Western Blot : 1:500-1:2000
Limitations	This EXOC3 antibody is available for research use only.



Western blot testing of human MCF7 cell lysate with EXOC3 antibody. Predicted molecular weight ~85 kDa.

### Description

Exocyst complex component 3 is a component of the exocyst complex involved in the docking of exocytic vesicles with fusion sites on the plasma membrane. [UniProt]

### Application Notes

Optimal dilution of the EXOC3 antibody should be determined by the researcher.

### Immunogen

A synthetic peptide specific to human EXOC3 protein was used as the immunogen for the EXOC3 Antibody.

## **Storage**

Store the EXOC3 antibody at -20oC.