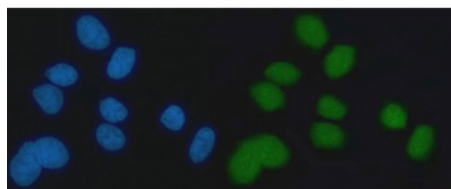


EXO1 Antibody / Exonuclease 1 (RQ7285)

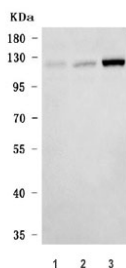
Catalog No.	Formulation	Size
RQ7285	0.5mg/ml if reconstituted with 0.2ml sterile DI water	100 ug

Bulk quote request

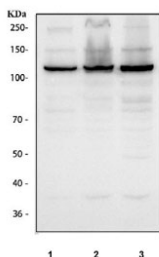
Availability	1-3 business days
Species Reactivity	Human
Format	Antigen affinity purified
Clonality	Polyclonal (rabbit origin)
Isotype	Rabbit IgG
Purity	Antigen affinity purified
Buffer	Lyophilized from 1X PBS with 2% Trehalose
UniProt	Q9UQ84
Localization	Nuclear
Applications	Western Blot : 0.5-1ug/ml Immunofluorescence : 5ug/ml Immunoprecipitation : 2ug/500ug of lysate Direct ELISA : 0.1-0.5ug/ml
Limitations	This EXO1 antibody is available for research use only.



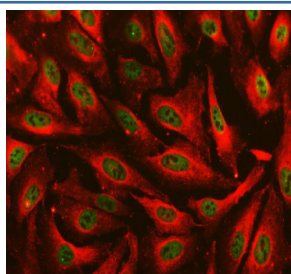
Immunofluorescent staining of FFPE human MCF7 cells with EXO1 antibody (green) and DAPI nuclear stain (blue). HIER: steam section in pH6 citrate buffer for 20 min.



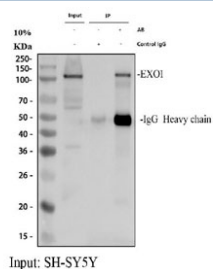
Western blot testing of human 1) K562, 2) U-251 and 3) MOLT4 cell lysate with EXO1 antibody. Expected molecular weight: 94-115 kDa.



Western blot testing of human 1) K562, 2) SH-SY5Y and 3) 293T cell lysate with EXO1 antibody. Expected molecular weight: 94-115 kDa.



Immunofluorescent staining of FFPE human U-2 OS cells with EXO1 antibody (green) and Alpha Tubulin mAb (red). HIER: steam section in pH6 citrate buffer for 20 min.



Immunoprecipitation of EXO1 protein from 500ug of human SH-SY5Y whole cell lysate with 2ug of EXO1 antibody.

Description

Exonuclease 1 is an enzyme that in humans is encoded by the EXO1 gene. It is mapped to 1q43. This gene encodes a protein with 5' to 3' exonuclease activity as well as an RNase H activity. It is similar to the *Saccharomyces cerevisiae* protein Exo1 which interacts with Msh2 and which is involved in mismatch repair and recombination. Alternative splicing of this gene results in three transcript variants encoding two different isoforms.

Application Notes

Optimal dilution of the EXO1 antibody should be determined by the researcher.

Immunogen

Recombinant human protein (amino acids Q25-Q846) was used as the immunogen for the EXO1 antibody.

Storage

After reconstitution, the EXO1 antibody can be stored for up to one month at 4°C. For long-term, aliquot and store at -20°C. Avoid repeated freezing and thawing.

