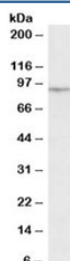


EWS Antibody (R36298)

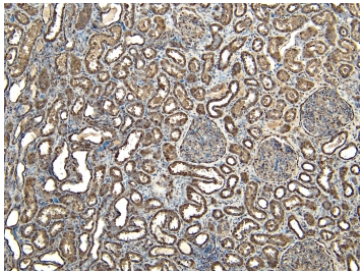
Catalog No.	Formulation	Size
R36298-100UG	0.5 mg/ml in 1X TBS, pH7.3, with 0.5% BSA (US sourced) and 0.02% sodium azide	100 ug

[Bulk quote request](#)

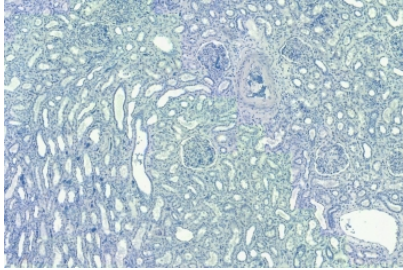
Availability	1-3 business days
Species Reactivity	Human
Predicted Reactivity	Mouse, Rat, Pig, Cow
Format	Antigen affinity purified
Clonality	Polyclonal (goat origin)
Isotype	Goat Ig
Purity	Antigen affinity
Gene ID	2130
Localization	Nuclear
Applications	Western Blot : 0.3-1ug/ml Immunohistochemistry (FFPE) : 7ug/ml ELISA (peptide) LOD : 1:64000
Limitations	This EWS antibody is available for research use only.



Western blot testing of nuclear HeLa lysate with EWS antibody at 0.3ug/ml. Predicted molecular weight: ~69 kDa, but routinely observed at ~90 kDa.



IHC staining of FFPE human kidney tissue with EWS antibody at 7ug/ml. Required HIER: steamed antigen retrieval with pH6 citrate buffer; HRP-staining.



Negative control: IHC staining of FFPE human kidney tissue without primary antibody. Required HIER: steamed antigen retrieval with pH6 citrate buffer; HRP-staining.

Description

Additional name(s) for this target protein: Ewing sarcoma breakpoint region 1; EWSR1

Application Notes

Optimal dilution of the EWS antibody should be determined by the researcher.

Immunogen

Amino acids TSVDQSSYSQQNTYG were used as the immunogen for this EWS antibody.

Storage

Aliquot and store the EWS antibody at -20oC.