

ETV6 Antibody / Tel (RQ4018)

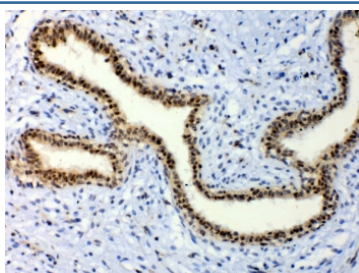
Catalog No.	Formulation	Size
RQ4018	0.5mg/ml if reconstituted with 0.2ml sterile DI water	100 ug

Bulk quote request

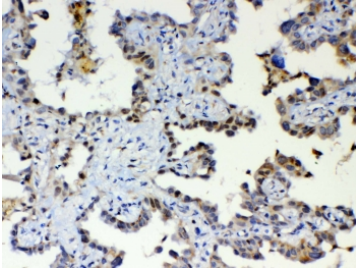
Availability	1-3 business days
Species Reactivity	Human, Mouse, Rat
Format	Antigen affinity purified
Clonality	Polyclonal (rabbit origin)
Isotype	Rabbit IgG
Purity	Antigen affinity purified
Buffer	Lyophilized from 1X PBS with 2% Trehalose and 0.025% sodium azide
UniProt	P41212
Localization	Nuclear
Applications	Western Blot : 0.5-1ug/ml IHC (FFPE) : 1-2ug/ml Direct ELISA : 0.1-0.5ug/ml
Limitations	This ETV6 antibody is available for research use only.



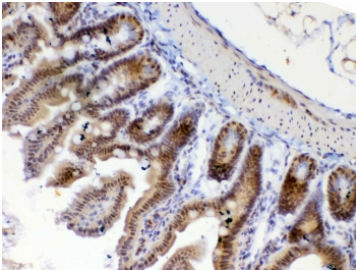
Western blot testing of human 1) placenta, 2) HeLa, 3) 22RV1, 4) SKOV and 5) A549 lysate with ETV6 antibody at 0.5ug/ml. Predicted molecular weight ~53 kDa.



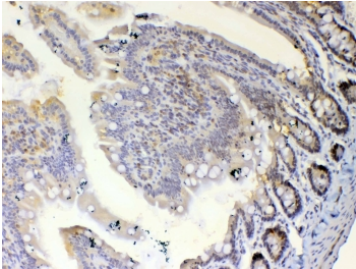
IHC testing of FFPE human breast cancer tissue with ETV6 antibody at 1ug/ml. Required HIER: steam section in pH6 citrate buffer for 20 min and allow to cool prior to testing.



IHC testing of FFPE human lung cancer tissue with ETV6 antibody at 1ug/ml. Required HIER: steam section in pH6 citrate buffer for 20 min and allow to cool prior to testing.



IHC testing of FFPE mouse small intestine tissue with ETV6 antibody at 1ug/ml. Required HIER: steam section in pH6 citrate buffer for 20 min and allow to cool prior to testing.



IHC testing of FFPE rat small intestine tissue with ETV6 antibody at 1ug/ml. Required HIER: steam section in pH6 citrate buffer for 20 min and allow to cool prior to testing.

Description

Transcription factor ETV6 is a protein that in humans is encoded by the ETV6 gene. This gene encodes an ETS family transcription factor. The product of this gene contains two functional domains: a N-terminal pointed (PNT) domain that is involved in protein-protein interactions with itself and other proteins, and a C-terminal DNA-binding domain. Gene knockout studies in mice suggest that it is required for hematopoiesis and maintenance of the developing vascular network. This gene is known to be involved in a large number of chromosomal rearrangements associated with leukemia and congenital fibrosarcoma.

Application Notes

Optimal dilution of the ETV6 antibody should be determined by the researcher.

Immunogen

A recombinant human partial protein corresponding to amino acids E327-Q448 was used as the immunogen for the ETV6 antibody.

Storage

After reconstitution, the ETV6 antibody can be stored for up to one month at 4oC. For long-term, aliquot and store at -20oC. Avoid repeated freezing and thawing.

