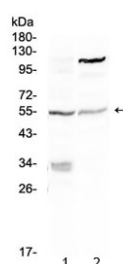


ETS1 Antibody (R32685)

Catalog No.	Formulation	Size
R32685	0.5mg/ml if reconstituted with 0.2ml sterile DI water	100 ug

Bulk quote request

Availability	1-3 business days
Species Reactivity	Human, Mouse
Format	Antigen affinity purified
Clonality	Polyclonal (rabbit origin)
Isotype	Rabbit IgG
Purity	Antigen affinity
Buffer	Lyophilized from 1X PBS with 2.5% BSA, 0.025% sodium azide
UniProt	P14921
Applications	Western Blot : 0.5-1ug/ml
Limitations	This ETS1 antibody is available for research use only.



Western blot testing of 1) mouse NIH3T3 and 2) human A375 lysate with ETS1 antibody at 0.5ug/ml. Predicted molecular weight ~51 kDa.

Description

Protein C-ets-1 is a protein that in humans is encoded by the ETS1 gene. It is mapped to 11q24.3. This gene encodes a member of the ETS family of transcription factors, which are defined by the presence of a conserved ETS DNA-binding domain that recognizes the core consensus DNA sequence GGAA/T in target genes. These proteins function either as transcriptional activators or repressors of numerous genes, and are involved in stem cell development, cell senescence and death, and tumorigenesis.

Application Notes

Optimal dilution of the ETS1 antibody should be determined by the researcher.

Immunogen

Amino acids 67-98 (KDPRQWTETHVRDWVMWAVNEFSLKGVDFQKF) from the human protein were used as the immunogen for the ETS1 antibody.

Storage

After reconstitution, the ETS1 antibody can be stored for up to one month at 4oC. For long-term, aliquot and store at -20oC. Avoid repeated freezing and thawing.