

ETS1 Antibody [clone 1601CT512.35.61] (F53803)

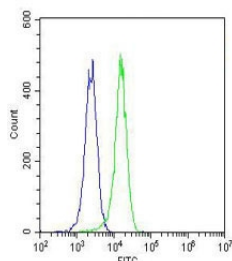
Catalog No.	Formulation	Size
F53803-0.2ML	In 1X PBS, pH 7.4, with 0.09% sodium azide	0.2 ml
F53803-0.05ML	In 1X PBS, pH 7.4, with 0.09% sodium azide	0.05 ml

[Bulk quote request](#)

Availability	1-3 business days
Species Reactivity	Human
Format	Purified
Host	Mouse
Clonality	Monoclonal (mouse origin)
Isotype	Mouse IgG2b, kappa
Clone Name	1601CT512.35.61
Purity	Protein G affinity chromatography
UniProt	P14921
Applications	Western Blot : 1:250-500 FACS (intracellular) : 1:25
Limitations	This ETS1 antibody is available for research use only.



Western blot testing of human MOLT4 cell lysate with ETS1 antibody at 1:500. Predicted molecular weight: 51 kDa.



Intracellular FACS staining of K562 cells with ETS1 antibody (green) and [isotype control](#) (blue) at 1:25.

Description

Transcription factor. Directly controls the expression of cytokine and chemokine genes in a wide variety of different cellular contexts. May control the differentiation, survival and proliferation of lymphoid cells. May also regulate angiogenesis through regulation of expression of genes controlling endothelial cell migration and invasion.

Application Notes

Titration of the ETS1 antibody may be required due to differences in protocols and substrate sensitivity.

Immunogen

Human recombinant protein was used as the immunogen for this ETS1 antibody.

Storage

Aliquot the ETS1 antibody and store frozen at -20oC or colder. Avoid repeated freeze-thaw cycles.