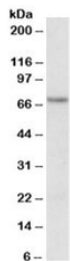


ETFDH Antibody (R33793)

Catalog No.	Formulation	Size
R33793-100UG	0.5 mg/ml in 1X TBS, pH7.3, with 0.5% BSA (US sourced) and 0.02% sodium azide	100 ug

[Bulk quote request](#)

Availability	1-3 business days
Species Reactivity	Human, Mouse, Rat
Predicted Reactivity	Cow, Dog, Rabbit
Format	Antigen affinity purified
Host	Goat
Clonality	Polyclonal (goat origin)
Isotype	Goat Ig
Purity	Antigen affinity
Gene ID	2110
Applications	Western Blot : 1-3ug/ml ELISA (peptide) LOD : 1:2000
Limitations	This ETFDH antibody is available for research use only.



Western blot testing of human kidney lysate with ETFDH antibody at 1ug/ml. Predicted molecular weight: ~69kDa.

Description

Additional name(s) for this target protein: Electron-transferring-flavoprotein dehydrogenase

Application Notes

Optimal dilution of the ETFDH antibody should be determined by the researcher.

Immunogen

Amino acids EHDQPAHLTLRD were used as the immunogen for this ETFDH antibody.

Storage

Aliquot and store the ETFDH antibody at -20oC.