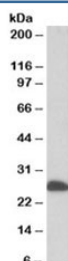


ETFB Antibody (R35511)

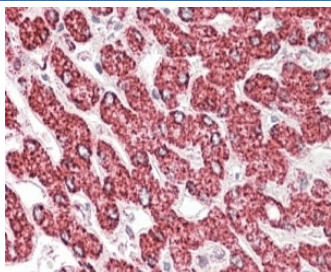
Catalog No.	Formulation	Size
R35511-100UG	0.5 mg/ml in 1X TBS, pH7.3, with 0.5% BSA (US sourced) and 0.02% sodium azide	100 ug

[Bulk quote request](#)

Availability	1-3 business days
Species Reactivity	Human, Mouse, Rat
Predicted Reactivity	Cow, Dog
Format	Antigen affinity purified
Host	Goat
Clonality	Polyclonal (goat origin)
Isotype	Goat Ig
Purity	Antigen affinity
Gene ID	2109
Applications	Western Blot : 1-3ug/ml Immunohistochemistry (FFPE) : 3-5ug/ml ELISA (peptide) LOD : 1:8000
Limitations	This ETFB antibody is available for research use only.



Western blot testing of human liver lysate with ETFB antibody at 0.1ug/ml. Predicted molecular weight: ~28kDa.



IHC staining of FFPE human liver with ETFB antibody at 4ug/ml. HIER: steamed with pH6 citrate buffer, AP-staining.

Description

Additional name(s) for this target protein: Electron-transfer-flavoprotein, beta polypeptide

Application Notes

Optimal dilution of the ETFB antibody should be determined by the researcher.

Immunogen

Amino acids QVTLEGDKLKVERE were used as the immunogen for this ETFB antibody.

Storage

Aliquot and store the ETFB antibody at -20oC.