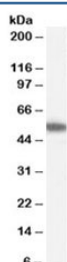


ETEA Antibody (R34301)

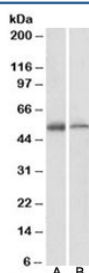
Catalog No.	Formulation	Size
R34301-100UG	0.5 mg/ml in 1X TBS, pH7.3, with 0.5% BSA (US sourced) and 0.02% sodium azide	100 ug

[Bulk quote request](#)

Availability	1-3 business days
Species Reactivity	Human, Mouse
Predicted Reactivity	Cow, Dog, Rat
Format	Antigen affinity purified
Clonality	Polyclonal (goat origin)
Isotype	Goat Ig
Purity	Antigen affinity
Gene ID	23197
Applications	Western Blot : 0.3-1ug/ml ELISA (peptide) LOD : 1:16000
Limitations	This ETEA antibody is available for research use only.



Western blot testing of Jurkat lysate with ETEA antibody at 0.3ug/ml. Predicted molecular weight: ~53kDa.



Western blot testing of A) human and B) mouse thymus lysate with ETEA antibody at 1ug/ml. Predicted molecular weight: ~53kDa.

Description

Additional name(s) for this target protein: Expressed in T-cells and eosinophils in atopic dermatitis, UBXD8; FAF2

Application Notes

Optimal dilution of the ETEA antibody should be determined by the researcher.

Immunogen

Amino acids HTEVLFVQDLTDE were used as the immunogen for this ETEA antibody.

Storage

Aliquot and store the ETEA antibody at -20oC.