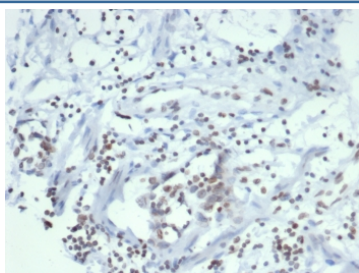


Estrogen Sulfotransferase Antibody / SULT1E1 [clone SULT1E1/7124] (V4345)

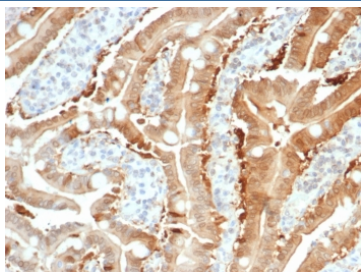
Catalog No.	Formulation	Size
V4345-100UG	0.2 mg/ml in 1X PBS with 0.1 mg/ml BSA (US sourced), 0.05% sodium azide	100 ug
V4345-20UG	0.2 mg/ml in 1X PBS with 0.1 mg/ml BSA (US sourced), 0.05% sodium azide	20 ug
V4345SAF-100UG	1 mg/ml in 1X PBS; BSA free, sodium azide free	100 ug

Bulk quote request

Availability	1-3 business days
Species Reactivity	Human
Format	Purified
Clonality	Monoclonal (mouse origin)
Isotype	Mouse IgG2, kappa
Clone Name	SULT1E1/7124
Purity	Protein A/G affinity
UniProt	P49888
Localization	Cytoplasm, nuclear membrane
Applications	Western Blot : 1-2ug/ml Immunohistochemistry (FFPE) : 1-2ug/ml for 30 minutes at RT
Limitations	This Estrogen Sulfotransferase antibody is available for research use only.



IHC staining of FFPE human ovarian carcinoma tissue with Estrogen Sulfotransferase antibody (clone SULT1E1/7124). HIER: boil tissue sections in pH 9 10mM Tris with 1mM EDTA for 20 min and allow to cool before testing.



IHC staining of FFPE human small intestine tissue with Estrogen Sulfotransferase antibody (clone SULT1E1/7124). HIER: boil tissue sections in pH 9 10mM Tris with 1mM EDTA for 20 min and allow to cool before testing.

Description

The soluble sulfotransferases contribute to the elimination of xenobiotics, the activation of procarcinogens and the regulation of hormones by catalyzing the sulfate conjugation of these substances. SULT1E1, also known as STE, is a 294 amino acid member of the SULT1 family. Localized to the cytoplasm and expressed in intestine, liver and kidney, SULT1E1 exists as a homodimer that is thought to control estrogen receptor (ER) levels by sulfurylating free estradiol. Defects in the gene encoding SULT1E1 are associated with an increased risk for endometrial cancer, suggesting a role for SULT1E1 in tumorigenesis.

Application Notes

Optimal dilution of the Estrogen Sulfotransferase antibody should be determined by the researcher.

Immunogen

A recombinant partial protein sequence (within amino acids 100-294) from the human protein was used as the immunogen for the Estrogen Sulfotransferase antibody.

Storage

Aliquot the Estrogen Sulfotransferase antibody and store frozen at -20oC or colder. Avoid repeated freeze-thaw cycles.