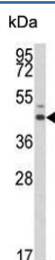


## Estrogen-Related Receptor Alpha Antibody / ESRRA (F54460)

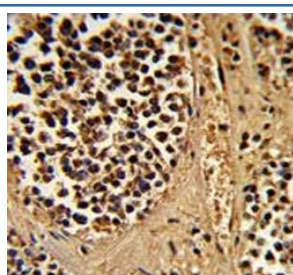
Catalog No.	Formulation	Size
F54460-0.4ML	In 1X PBS, pH 7.4, with 0.09% sodium azide	0.4 ml
F54460-0.08ML	In 1X PBS, pH 7.4, with 0.09% sodium azide	0.08 ml

**Bulk quote request**

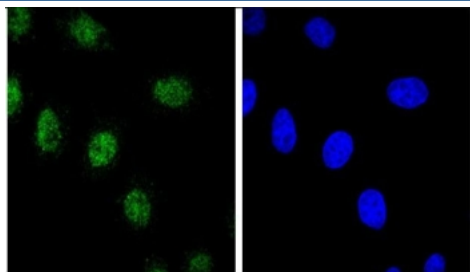
<b>Availability</b>	1-3 business days
<b>Species Reactivity</b>	Human
<b>Format</b>	Purified
<b>Clonality</b>	Polyclonal (rabbit origin)
<b>Isotype</b>	Rabbit Ig
<b>Purity</b>	Antigen affinity purified
<b>UniProt</b>	P11474
<b>Applications</b>	Immunofluorescence : 1:25 Western Blot : 1:500-1:2000 Flow Cytometry : 1:25 (1x10 <sup>6</sup> cells) Immunohistochemistry (FFPE) : 1:25
<b>Limitations</b>	This Estrogen-Related Receptor Alpha antibody is available for research use only.



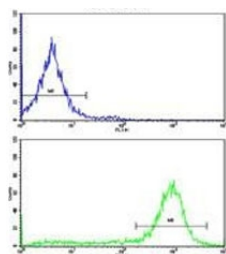
Western blot testing of human A375 cell lysate with Estrogen-Related Receptor Alpha antibody. Expected molecular weight: 46-52 kDa.



IHC testing of FFPE human kidney carcinoma tissue with Estrogen-Related Receptor Alpha antibody. HIER: steam section in pH6 citrate buffer for 20 min and allow to cool prior to staining.



Immunofluorescent staining of human HEK293 cells with Estrogen-Related Receptor Alpha antibody (green) and DAPI nuclear stain (blue).



Flow cytometry testing of human HEK293 cells with Estrogen-Related Receptor Alpha antibody; Blue=isotype control, Green= Estrogen-Related Receptor Alpha antibody.

## Description

ESRRA is a nuclear receptor that is closely related to the estrogen receptor. This protein acts as a site-specific transcription regulator and has been also shown to interact with estrogen and the transcription factor TFIIB by direct protein-protein contact. The binding and regulatory activities of this protein have been demonstrated in the regulation of a variety of genes including lactoferrin, osteopontin, medium-chain acyl coenzyme A dehydrogenase (MCAD) and thyroid hormone receptor genes.

## Application Notes

The stated application concentrations are suggested starting points. Titration of the Estrogen-Related Receptor Alpha antibody may be required due to differences in protocols and secondary/substrate sensitivity.

## Immunogen

A portion of amino acids 131-159 from the human protein was used as the immunogen for the Estrogen-Related Receptor Alpha antibody.

## Storage

Aliquot the Estrogen-Related Receptor Alpha antibody and store frozen at -20°C or colder. Avoid repeated freeze-thaw cycles.