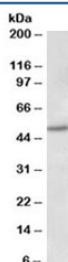


Estrogen receptor beta Antibody (R36252)

Catalog No.	Formulation	Size
R36252-100UG	0.5 mg/ml in 1X TBS, pH7.3, with 0.5% BSA (US sourced) and 0.02% sodium azide	100 ug

[Bulk quote request](#)

Availability	1-3 business days
Species Reactivity	Human
Format	Antigen affinity purified
Host	Goat
Clonality	Polyclonal (goat origin)
Isotype	Goat Ig
Purity	Antigen affinity
Gene ID	2100
Applications	Western Blot : 1-3ug/ml ELISA (peptide) LOD : 1:128000
Limitations	This Estrogen receptor beta antibody is available for research use only.



Western blot testing of human placenta lysate with Estrogen receptor beta antibody at 1ug/ml. Predicted/expected size 53~59KD

Description

Additional name(s) for this target protein: ESR2; ER-beta

Application Notes

Optimal dilution of the Estrogen receptor beta antibody should be determined by the researcher.

Immunogen

Amino acids TQDADSSRKLAH were used as the immunogen for this Estrogen receptor beta antibody.

Storage

Aliquot and store the Estrogen receptor beta antibody at -20oC.