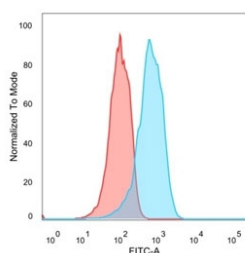


Estrogen Receptor beta 1 Antibody [clone PPG5/10] (V8667)

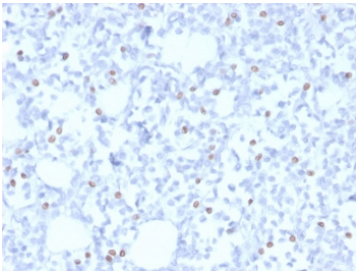
Catalog No.	Formulation	Size
V8667-100UG	0.2 mg/ml in 1X PBS with 0.1 mg/ml BSA (US sourced) and 0.05% sodium azide	100 ug
V8667-20UG	0.2 mg/ml in 1X PBS with 0.1 mg/ml BSA (US sourced) and 0.05% sodium azide	20 ug
V8667SAF-100UG	1 mg/ml in 1X PBS; BSA free, sodium azide free	100 ug

[Bulk quote request](#)

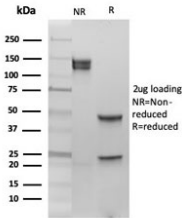
Availability	1-3 business days
Species Reactivity	Human
Format	Purified
Host	Mouse
Clonality	Monoclonal (mouse origin)
Isotype	Mouse IgG2a, kappa
Clone Name	PPG5/10
Purity	Protein G affinity chromatography
UniProt	Q92731
Localization	Nuclear
Applications	Flow Cytometry : 2-4ug/million cells Immunofluorescence : 2-4ug/ml Western Blot : 1-2ug/ml Immunohistochemistry (FFPE) : 1-2ug/ml for 30 minutes at RT
Limitations	This Estrogen Receptor beta 1 antibody is available for research use only.



Flow cytometry testing of PFA-fixed human MCF7 cells with Estrogen Receptor beta 1 antibody (clone PPG5/10); Red=isotype control, Blue= Estrogen Receptor beta 1 antibody.



IHC staining of FFPE human breast carcinoma with Estrogen Receptor beta 1 antibody (clone PPG5/10). HIER: boil tissue sections in pH 9 10mM Tris with 1mM EDTA for 20 min and allow to cool before testing.



SDS-PAGE analysis of purified, BSA-free Estrogen Receptor beta 1 antibody (clone PPG5/10) as confirmation of integrity and purity.

Description

Estrogen receptors (ER) are members of the steroid/thyroid hormone receptor superfamily of ligand-activated transcription factors. Estrogen receptors, including ER-alpha and ER-beta, contain DNA binding and ligand binding domains and are critically involved in regulating the normal function of reproductive tissues. They are located in the nucleus, though some estrogen receptors associate with the cell surface membrane and can be rapidly activated by exposure of cells to estrogen. ER-alpha and ER-beta are differentially activated by various ligands. Receptor-ligand interactions trigger a cascade of events, including dissociation from heat shock proteins, receptor dimerization, phosphorylation and the association of the hormone activated receptor with specific regulatory elements in target genes. Evidence suggests that ER-alpha and ER-beta may be regulated by distinct mechanisms even though they share many functional characteristics.

For comprehensive detection of Estrogen receptor beta across hormone signaling and tumor biology studies, see our [Estrogen Receptor beta antibody \(clone ERb455\)](#).

Application Notes

Optimal dilution of the Estrogen Receptor beta 1 antibody should be determined by the researcher.

Immunogen

Amino acids CEDSKSKEGSQNPQSQ from the C terminus of the human estrogen receptor beta 1 isomer were used as the immunogen for the Estrogen Receptor beta 1 antibody.

Storage

Store the Estrogen Receptor beta 1 antibody at 2-8oC (with azide) or aliquot and store at -20oC or colder (without azide).

