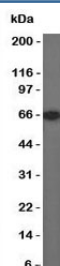


Estrogen Receptor Antibody [clone SPM567] (V9016)

Catalog No.	Formulation	Size
V9016-100UG	0.2 mg/ml in 1X PBS with 0.1 mg/ml BSA (US sourced) and 0.05% sodium azide	100 ug
V9016-20UG	0.2 mg/ml in 1X PBS with 0.1 mg/ml BSA (US sourced) and 0.05% sodium azide	20 ug
V9016SAF-100UG	1 mg/ml in 1X PBS; BSA free, sodium azide free	100 ug

[Bulk quote request](#)

Availability	1-3 business days
Species Reactivity	Human
Format	Purified
Host	Mouse
Clonality	Monoclonal (mouse origin)
Isotype	Mouse IgG1, kappa
Clone Name	SPM567
Purity	Protein G affinity chromatography
UniProt	P03372
Localization	Nuclear
Applications	Western Blot : 1-2ug/ml for 2 hours at RT
Limitations	This Estrogen Receptor antibody is available for research use only.



Western blot of Estrogen Receptor in MCF-7 lysate using Estrogen Receptor antibody (SPM567).

Description

This mAb is specific to ER alpha and shows minimal cross-reaction with other members of the family. ER is an important regulator of growth and differentiation in the mammary gland. Presence of ER in breast tumors indicates an increased likelihood of response to anti-estrogen (e.g. tamoxifen) therapy.

Application Notes

The optimal dilution of the Estrogen Receptor antibody for each application should be determined by the researcher.

Immunogen

Recombinant human Estrogen Receptor alpha protein (amino acids 2-185) was used as the immunogen for this Estrogen Receptor alpha antibody.

Storage

Store the Estrogen Receptor antibody at 2-8oC (with azide) or aliquot and store at -20oC or colder (without azide).