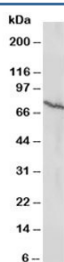


## Estrogen Receptor Antibody (beta) (R30294)

Catalog No.	Formulation	Size
R30294	0.5mg/ml if reconstituted with 0.2ml sterile DI water	100 ug

**Bulk quote request**

<b>Availability</b>	1-3 business days
<b>Species Reactivity</b>	Human
<b>Format</b>	Antigen affinity purified
<b>Clonality</b>	Polyclonal (rabbit origin)
<b>Isotype</b>	Rabbit IgG
<b>Purity</b>	Antigen affinity
<b>Buffer</b>	Lyophilized from 1X PBS with 2% Trehalose and 0.025% sodium azide
<b>UniProt</b>	Q92731
<b>Applications</b>	Western Blot : 0.5-1ug/ml
<b>Limitations</b>	This Estrogen Receptor antibody is available for research use only.



Western blot testing of Estrogen receptor antibody and MCF-7 lysate (human breast cancer line). Predicted molecular weight: 53~59 kDa.

## Description

Estrogen receptor-beta, referred to as ESR2 or ER $\beta$ , is a member of the superfamily of nuclear receptors which can transduce extracellular signals into transcriptional responses. This gene is mapped to 14q and comprises 8 exons spanning approximately 40 kb. It is expressed in multiple tissues, including developing spermatids of the testis and in ovarian granulosa cells. ER $\beta$  is homologous to the previously identified ER $\alpha$  and has an overlapping but nonidentical tissue distribution. The DNA-binding domain of ER $\beta$  is 96% conserved compared to ER $\alpha$ , and the ligand-binding domain shows 58% conserved residues. Estrogen receptor beta is expressed in human thymus, spleen, ovary, and testis. ER $\beta$  mRNA was coexpressed with ER $\alpha$  and its splice variants in 60% of prolactinomas, 100% of mixed growth hormone /prolactin tumors, and 29% of gonadotroph tumors. Gene expression was not limited to ER $\alpha$ -positive tumor subtypes,

however, and was also found in 100% of null cell tumors, 80% of somatotroph tumors, and 60% of corticotroph tumors.

## Application Notes

The stated application concentrations are suggested starting amounts. Titration of the Estrogen Receptor antibody may be required due to differences in protocols and secondary/substrate sensitivity.

## Immunogen

An amino acid sequence from the N-terminus of human Estrogen Receptor beta (HGSIIYPSSYVDSHHEY PAMTFYS) was used as the immunogen for this Estrogen Receptor antibody.

## Storage

After reconstitution, the Estrogen Receptor antibody can be stored for up to one month at 4°C. For long-term, aliquot and store at -20°C. Avoid repeated freezing and thawing.