

## Estrogen Receptor Antibody (alpha) (R31605)

| Catalog No. | Formulation   | Size   |
|-------------|---|--------|
| R31605      | 0.5mg/ml if reconstituted with 0.2ml sterile DI water | 100 ug |

**Bulk quote request**

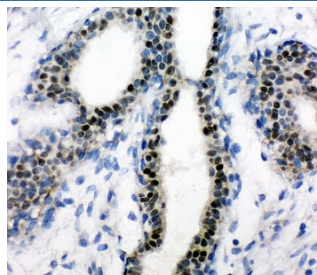
|                           |   |
|---------------------------|---|
| <b>Availability</b>       | 1-3 business days   |
| <b>Species Reactivity</b> | Human   |
| <b>Format</b>             | Antigen affinity purified   |
| <b>Host</b>               | Rabbit  |
| <b>Clonality</b>          | Polyclonal (rabbit origin)  |
| <b>Isotype</b>            | Rabbit IgG  |
| <b>Purity</b>             | Antigen affinity  |
| <b>Buffer</b>             | Lyophilized from 1X PBS with 2.5% BSA and 0.025% sodium azide       |
| <b>Gene ID</b>            | 2099  |
| <b>Localization</b>       | Nuclear   |
| <b>Applications</b>       | Western Blot : 0.5-1ug/ml<br>IHC (FFPE) : 0.5-1ug/ml                |
| <b>Limitations</b>        | This Estrogen Receptor antibody is available for research use only. |



Western blot testing of Estrogen Receptor antibody and MCF-7 lysate (human breast tumor cell line). Predicted molecular weight ~67 kDa.



Western blot testing of Estrogen Receptor antibody and recombinant human protein (0.5ng)



IHC-P: Estrogen Receptor antibody testing of human breast cancer tissue

## Description

Estrogen receptor alpha ( $ER\alpha$ ), also known as NR3A1, is one of two main types of estrogen receptor, a nuclear protein that is activated by the sex hormone estrogen. ERs are involved in pathological processes including breast cancer, endometrial cancer, and osteoporosis. In humans,  $ER\alpha$  is encoded by the gene ESR1. It is mapped to 6q25.1. This gene is a ligand-activated transcription factor composed of several domains important for hormone binding, DNA binding, and activation of transcription. The protein localizes to the nucleus where it may form a homodimer or a heterodimer with estrogen receptor 2/beta. Estrogen and its receptors are essential for sexual development and reproductive function, it also play a role in other tissues such as bone.

## Application Notes

The stated application concentrations are suggested starting amounts. Titration of the Estrogen Receptor antibody may be required due to differences in protocols and secondary/substrate sensitivity.

## Immunogen

Human ER $\alpha$  partial recombinant protein (AA 425-595) was used as the immunogen for this Estrogen Receptor antibody.

## Storage

After reconstitution, the Estrogen Receptor antibody can be stored for up to one month at 4°C. For long-term, aliquot and store at -20°C. Avoid repeated freezing and thawing.