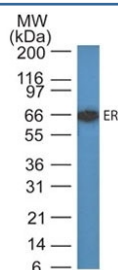


Estrogen Receptor Antibody (alpha) [clone ER505] (V2112)

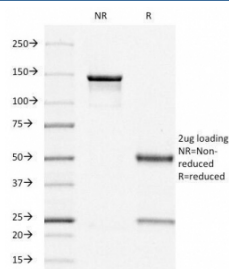
Catalog No.	Formulation	Size
V2112-100UG	0.2 mg/ml in 1X PBS with 0.1 mg/ml BSA (US sourced) and 0.05% sodium azide	100 ug
V2112-20UG	0.2 mg/ml in 1X PBS with 0.1 mg/ml BSA (US sourced) and 0.05% sodium azide	20 ug
V2112SAF-100UG	1 mg/ml in 1X PBS; BSA free, sodium azide free	100 ug

[Bulk quote request](#)

Species Reactivity	Human
Format	Purified
Host	Mouse
Clonality	Monoclonal (mouse origin)
Isotype	Mouse IgG1, kappa
Clone Name	ER505
Purity	Protein G affinity chromatography
Gene ID	2099
Localization	Nuclear
Applications	Western Blot : 1-2ug/ml
Limitations	This Estrogen Receptor antibody is available for research use only.



Western blot testing of human MCF7 cell lysate with Estrogen Receptor antibody (ER505). Predicted molecular weight ~67 kDa.



SDS-PAGE analysis of purified, BSA-free Estrogen Receptor antibody (clone ER505) as confirmation of integrity and purity.

Description

Estrogen receptor (ER) is an important regulator of growth and differentiation in the mammary gland. It is found in two forms, alpha and beta. Both forms are widely expressed, however, alpha is the predominant form in endometrium and breast cancer cells, and beta is more highly expressed in brain, kidney, heart, lung and bone. Activated Estrogen receptor dimerizes and forms both homo- and heterodimers. ER contains five domains: A-F. The A and B domain are able to weakly activate ER in the absence of ligand. The C domain binds DNA and the E domain contains the ligand binding site. Presence of ER in breast tumors indicates an increased likelihood of response to anti-estrogen (e.g. tamoxifen) therapy. This antibody is specific to estrogen receptor alpha and shows minimal cross-reaction with other members of the family.

Application Notes

Titration of the Estrogen Receptor antibody may be required for optimal performance.

Immunogen

Recombinant human Estrogen Receptor alpha protein (aa 2-185) was used as the immunogen for this antibody.

Storage

Store the Estrogen Receptor antibody at 2-8°C (with azide) or aliquot and store at -20°C or colder (without azide).

Alternate Names

Nuclear receptor subfamily 3 group A member 1

References (2)