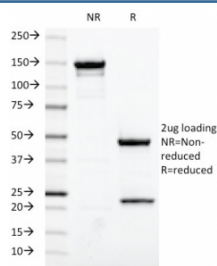


Estrogen Receptor alpha Antibody [clone ESR1/420] (V8779)

Catalog No.	Formulation	Size
V8779-100UG	0.2 mg/ml in 1X PBS with 0.1 mg/ml BSA (US sourced), 0.05% sodium azide	100 ug
V8779-20UG	0.2 mg/ml in 1X PBS with 0.1 mg/ml BSA (US sourced) and 0.05% sodium azide	20 ug
V8779SAF-100UG	1 mg/ml in 1X PBS; BSA free, sodium azide free	100 ug

Bulk quote request

Availability	1-3 business days
Species Reactivity	Human
Format	Purified
Host	Mouse
Clonality	Monoclonal (mouse origin)
Isotype	Mouse IgG2a, kappa
Clone Name	ESR1/420
Purity	Protein A/G affinity
UniProt	P03372
Localization	Nuclear
Applications	Flow Cytometry : 1-2ug/million cells Immunofluorescence : 1-2ug/ml
Limitations	This Estrogen Receptor alpha antibody is available for research use only.



SDS-PAGE analysis of purified, BSA-free Estrogen Receptor alpha antibody (ESR1/420) as confirmation of integrity and purity.

Description

This mAb is specific to ER alpha and shows minimal cross-reaction with other members of the family. ER is an important regulator of growth and differentiation in the mammary gland. Presence of ER in breast tumors indicates an increased likelihood of response to anti-estrogen (e.g. tamoxifen) therapy.

Application Notes

Optimal dilution of the Estrogen Receptor alpha antibody should be determined by the researcher.

Immunogen

A portion of amino acids 290-560 was used as the immunogen for the Estrogen Receptor alpha antibody. The epitope of this mAb is between amino acids 300-550.

Storage

Aliquot the Estrogen Receptor alpha antibody and store frozen at -20oC or colder. Avoid repeated freeze-thaw cycles.