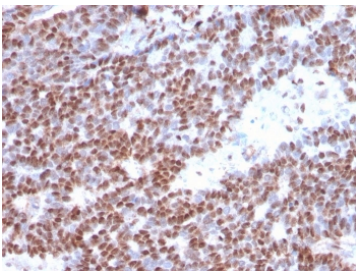


## Estrogen Receptor alpha Antibody [clone ESR1/3373] (V7809)

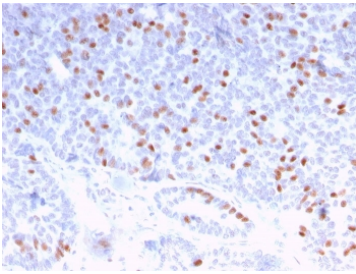
Catalog No.	Formulation	Size
V7809-100UG	0.2 mg/ml in 1X PBS with 0.1 mg/ml BSA (US sourced) and 0.05% sodium azide	100 ug
V7809-20UG	0.2 mg/ml in 1X PBS with 0.1 mg/ml BSA (US sourced) and 0.05% sodium azide	20 ug
V7809SAF-100UG	1 mg/ml in 1X PBS; BSA free, sodium azide free	100 ug

### Bulk quote request

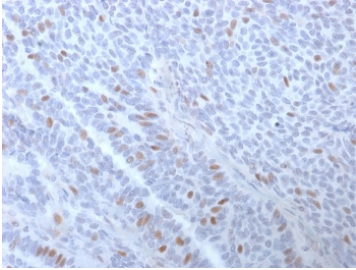
<b>Availability</b>	1-3 business days
<b>Species Reactivity</b>	Human
<b>Format</b>	Purified
<b>Host</b>	Mouse
<b>Clonality</b>	Monoclonal (mouse origin)
<b>Isotype</b>	Mouse IgG2a, kappa
<b>Clone Name</b>	ESR1/3373
<b>Purity</b>	Protein G affinity chromatography
<b>UniProt</b>	P03372
<b>Localization</b>	Nuclear
<b>Applications</b>	Immunohistochemistry (FFPE) : 1-2ug/ml
<b>Limitations</b>	This Estrogen Receptor alpha antibody is available for research use only.



IHC staining of FFPE human breast carcinoma with Estrogen Receptor alpha antibody (clone ESR1/3373). HIER: boil tissue sections in pH 9 10mM Tris with 1mM EDTA for 10-20 min and allow to cool before testing.



IHC staining of FFPE human breast carcinoma with Estrogen Receptor alpha antibody (clone ESR1/3373). HIER: boil tissue sections in pH 9 10mM Tris with 1mM EDTA for 10-20 min and allow to cool before testing.



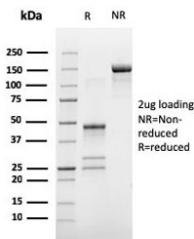
IHC staining of FFPE human breast carcinoma with Estrogen Receptor alpha antibody (clone ESR1/3373). HIER: boil tissue sections in pH 9 10mM Tris with 1mM EDTA for 10-20 min and allow to cool before testing.

Human Protein Microarray Specificity Validation



Analysis of HuProt(TM) microarray containing more than 19,000 full-length human proteins using Estrogen Receptor alpha antibody (clone ESR1/3373). These results demonstrate the foremost specificity of the ESR1/3373 mAb.

Z- and S- score: The Z-score represents the strength of a signal that an antibody (in combination with a fluorescently-tagged anti-IgG secondary Ab) produces when binding to a particular protein on the HuProt(TM) array. Z-scores are described in units of standard deviations (SD's) above the mean value of all signals generated on that array. If the targets on the HuProt(TM) are arranged in descending order of the Z-score, the S-score is the difference (also in units of SD's) between the Z-scores. The S-score therefore represents the relative target specificity of an Ab to its intended target.



SDS-PAGE analysis of purified, BSA-free Estrogen Receptor alpha antibody (clone ESR1/3373) as confirmation of integrity and purity.

## Description

This monoclonal antibody is specific to estrogen receptor alpha (ER alpha) and shows minimal cross-reaction with other members of the family. ER is an important regulator of growth and differentiation in the mammary gland. Presence of ER in breast tumors indicates an increased likelihood of response to anti-estrogen (e.g. tamoxifen) therapy. It strongly stains nuclei of epithelial cells in breast carcinomas.

For comprehensive detection of Estrogen receptor alpha across hormone signaling and breast cancer studies, see our [Estrogen Receptor alpha antibody \(clone ESR1/3557\)](#).

## Application Notes

Optimal dilution of the Estrogen Receptor alpha antibody should be determined by the researcher.

## Immunogen

Recombinant human full length protein was used as the immunogen for this Estrogen Receptor alpha antibody.

## Storage

Store the Estrogen Receptor alpha antibody at 2-8oC (with azide) or aliquot and store at -20oC or colder (without azide).