

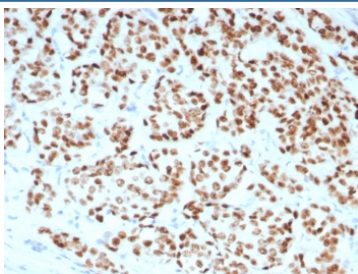
Estrogen Receptor alpha Antibody / ESR1 [clone rESR1/8761] (V5168)

Catalog No.	Formulation	Size
V5168-100UG	0.2 mg/ml in 1X PBS with 0.1 mg/ml BSA (US sourced), 0.05% sodium azide	100 ug
V5168-20UG	0.2 mg/ml in 1X PBS with 0.1 mg/ml BSA (US sourced), 0.05% sodium azide	20 ug
V5168SAF-100UG	1 mg/ml in 1X PBS; BSA free, sodium azide free	100 ug

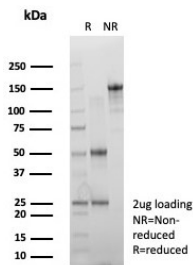
Recombinant **MOUSE MONOCLONAL**

[Bulk quote request](#)

Availability	1-3 business days
Species Reactivity	Human
Format	Purified
Host	Mouse
Clonality	Recombinant Mouse Monoclonal
Isotype	Mouse IgG2b, kappa
Clone Name	rESR1/8761
Purity	Protein A/G affinity
UniProt	P03372
Localization	Nucleus
Applications	Immunohistochemistry (FFPE) : 1-2ug/ml for 30 min at RT
Limitations	This Estrogen Receptor alpha antibody is available for research use only.



IHC staining of FFPE human breast carcinoma tissue with Estrogen Receptor alpha antibody (clone rESR1/8761). HIER: boil tissue sections in pH 9 10mM Tris with 1mM EDTA for 20 min and allow to cool before testing.



SDS-PAGE analysis of purified, BSA-free Estrogen Receptor alpha antibody (clone rESR1/8761) as confirmation of integrity and purity.

Description

Recognizes a protein of 67kDa, which is identified as estrogen receptor (ER) alpha. The ER gene consists of more than 140kb of genomic DNA divided into 8 exons, being translated into a protein with six functionally discrete domains, labeled A through F. This antibody strongly stains the nucleus of epithelial cells in breast carcinomas. The ER is an important regulator of growth and differentiation in the mammary gland. Presence of ER in breast tumors indicates an increased likelihood of response to antiestrogen (e.g. tamoxifen) therapy.

Application Notes

Optimal dilution of the Estrogen Receptor alpha antibody should be determined by the researcher.

Immunogen

A recombinant fragment corresponding to the C-terminus of human ER-alpha was used as the immunogen for the Estrogen Receptor alpha antibody.

Storage

Aliquot the Estrogen Receptor alpha antibody and store frozen at -20oC or colder. Avoid repeated freeze-thaw cycles.