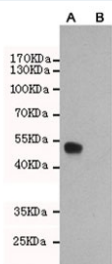


Estrogen Receptor alpha Antibody [clone 6F11-C3-G6] (F54018)

Catalog No.	Formulation	Size
F54018-0.1ML	In PBS with 50% glycerol and 0.03% ProClin 300	0.1 ml

Bulk quote request

Availability	1-3 business days
Species Reactivity	Human
Format	Purified
Host	Mouse
Clonality	Monoclonal (mouse origin)
Isotype	Mouse IgG2b
Clone Name	6F11-C3-G6
Purity	Protein G affinity
UniProt	P03372
Applications	Western Blot : 1:1000
Limitations	This Estrogen Receptor alpha antibody is available for research use only.



Western blot testing of A) CHO-K1 cells transfected with a partial E α protein and B) untransfected CHO-K1 cell lysate using Estrogen Receptor alpha antibody at 1:2000. Expected size of the partial protein ~50 kDa.

Description

Nuclear hormone receptor. The steroid hormones and their receptors are involved in the regulation of eukaryotic gene expression and affect cellular proliferation and differentiation in target tissues.

For a microarray-validated Estrogen receptor alpha antibody supporting high-specificity detection, see clone [ESR1/3557](#).

Application Notes

The stated application concentrations are suggested starting points. Titration of the Estrogen Receptor alpha antibody may be required due to differences in protocols and secondary/substrate sensitivity.

Immunogen

A human recombinant protein was used as the immunogen for this Estrogen Receptor alpha antibody.

Storage

Store the Estrogen Receptor alpha antibody at -20oC.