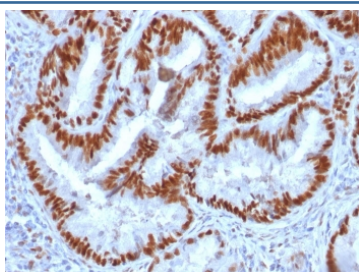


## Estrogen Receptor alpha Antibody [clone 1D5] (V7746)

Catalog No.	Formulation	Size
V7746-0.5ML	Culture supernatant with 0.05% sodium azide	0.5 ml
V7746-0.1ML	Culture supernatant with 0.05% sodium azide	0.1 ml

[Bulk quote request](#)

<b>Availability</b>	1-3 business days
<b>Species Reactivity</b>	Human
<b>Format</b>	Culture supernatant
<b>Host</b>	Mouse
<b>Clonality</b>	Monoclonal (mouse origin)
<b>Isotype</b>	Mouse IgG1, kappa
<b>Clone Name</b>	1D5
<b>Purity</b>	Culture supernatant
<b>UniProt</b>	P03372
<b>Localization</b>	Nuclear
<b>Applications</b>	Immunohistochemistry (FFPE) : 1:100-1:200
<b>Limitations</b>	This Estrogen Receptor alpha antibody is available for research use only.



IHC staining of FFPE human endometrial carcinoma with Estrogen Receptor alpha antibody (clone 1D5). HIER: boil tissue sections in pH 9 10mM Tris with 1mM EDTA for 10-20 min and allow to cool before testing.

## Description

This monoclonal antibody is specific to estrogen receptor alpha (ER alpha) and shows minimal cross-reaction with other members of the family. ER is an important regulator of growth and differentiation in the mammary gland. Presence of ER in breast tumors indicates an increased likelihood of response to anti-estrogen (e.g. tamoxifen) therapy. It strongly stains nuclei of epithelial cells in breast carcinomas.

## **Application Notes**

Optimal dilution of the Estrogen Receptor alpha antibody should be determined by the researcher.

## **Immunogen**

Recombinant human protein was used as the immunogen for this Estrogen Receptor alpha antibody.

## **Storage**

Store the Estrogen Receptor alpha antibody at 2-8oC (with azide) or aliquot and store at -20oC or colder (without azide).