

Estrogen-induced gene 121-like protein Antibody / EIG121L / KIAA1324L (F54567)

Catalog No.	Formulation	Size
F54567-0.4ML	In 1X PBS, pH 7.4, with 0.09% sodium azide	0.4 ml
F54567-0.08ML	In 1X PBS, pH 7.4, with 0.09% sodium azide	0.08 ml

Bulk quote request

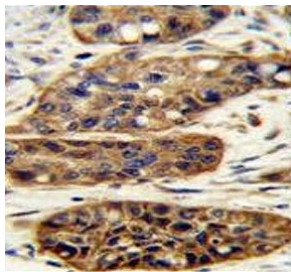
Availability	1-3 business days
Species Reactivity	Human, Mouse
Format	Purified
Clonality	Polyclonal (rabbit origin)
Isotype	Rabbit Ig
Purity	Antigen affinity purified
UniProt	A8MWY0
Applications	Flow Cytometry : 1:25 (1x10 ⁶ cells) Immunohistochemistry (FFPE) : 1:25 Western Blot : 1:500-1:2000
Limitations	This Estrogen-induced gene 121-like protein antibody is available for research use only.

kDa
250
130
95
72
55

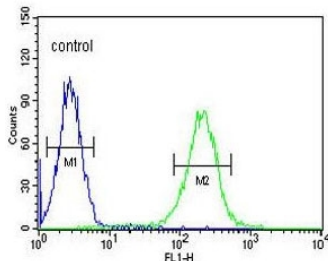
Western blot testing of mouse kidney lysate with Estrogen-induced gene 121-like protein antibody. Predicted molecular weight ~114 kDa.

kDa
250
130
95
72
55

Western blot testing of human K562 cell lysate with Estrogen-induced gene 121-like protein antibody. Predicted molecular weight ~114 kDa.



IHC testing of FFPE human esophageal carcinoma tissue with Estrogen-induced gene 121-like protein antibody. HIER: steam section in pH6 citrate buffer for 20 min and allow to cool prior to staining.



Flow cytometry testing of human K562 cells with Estrogen-induced gene 121-like protein antibody; Blue=isotype control, Green= Estrogen-induced gene 121-like protein antibody.

Description

Functions as a regulator of the BMP signaling pathway and may be involved in epidermal differentiation. [UniProt]

Application Notes

The stated application concentrations are suggested starting points. Titration of the Estrogen-induced gene 121-like protein antibody may be required due to differences in protocols and secondary/substrate sensitivity.

Immunogen

A portion of amino acids 109-138 from the human protein was used as the immunogen for the Estrogen-induced gene 121-like protein antibody.

Storage

Aliquot the Estrogen-induced gene 121-like protein antibody and store frozen at -20oC or colder. Avoid repeated freeze-thaw cycles.