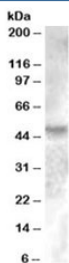


ESRRG Antibody (R33326)

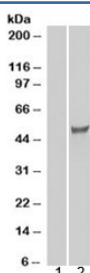
| Catalog No. | Formulation | Size |
|--------------|---|--------|
| R33326-100UG | 0.5 mg/ml in 1X TBS, pH7.3, with 0.5% BSA (US sourced) and 0.02% sodium azide | 100 ug |

[Bulk quote request](#)

| | |
|-----------------------------|--|
| Availability | 1-3 business days |
| Species Reactivity | Human |
| Predicted Reactivity | Mouse, Dog |
| Format | Antigen affinity purified |
| Host | Goat |
| Clonality | Polyclonal (goat origin) |
| Isotype | Goat Ig |
| Purity | Antigen affinity |
| Gene ID | 2104 |
| Applications | Western Blot : 0.2-1ug/ml ELISA (peptide) LOD : 1:16000 |
| Limitations | This ESRRG antibody is available for research use only. |



Western blot testing of human breast lysate with ESRRG antibody at 0.2ug/ml. Predicted molecular weight: ~51 kDa.



Western blot of HEK293 lysate overexpressing ESRRG probed with ESRRG antibody (mock transfection in lane 1). Predicted molecular weight: ~51 kDa.

Description

Additional name(s) for this target protein: Estrogen-related receptor gamma

Application Notes

Optimal dilution of the ESRRG antibody should be determined by the researcher.

Immunogen

Amino acids CRMSNKDRHIDS were used as the immunogen for this ESRRG antibody.

Storage

Aliquot and store the ESRRG antibody at -20oC.