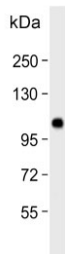


Espin Antibody / ESPN (F54893)

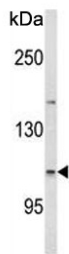
Catalog No.	Formulation	Size
F54893-0.4ML	In 1X PBS, pH 7.4, with 0.09% sodium azide	0.4 ml
F54893-0.08ML	In 1X PBS, pH 7.4, with 0.09% sodium azide	0.08 ml

[Bulk quote request](#)

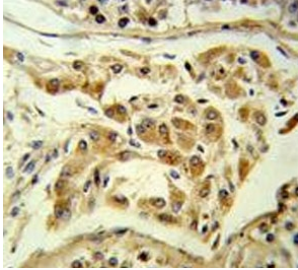
Availability	1-3 business days
Species Reactivity	Human
Format	Purified
Host	Rabbit
Clonality	Polyclonal (rabbit origin)
Isotype	Rabbit Ig
Purity	Antigen affinity purified
UniProt	B1AK53
Localization	Cytoplasmic
Applications	Flow Cytometry : 1:10-1:50 (1x10e6 cells) Immunohistochemistry (FFPE) : 1:50-1:100 Western Blot : 1:500-1:1000
Limitations	This Espin antibody is available for research use only.



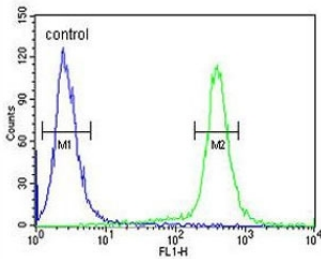
Western blot testing of human SK-BR-3 cell lysate with Espin antibody. Predicted molecular weight ~92 kDa; isoforms can be observed at ~110 kDa and ~30 kDa.



Western blot testing of human HEK293 cell lysate with Espin antibody. Predicted molecular weight ~92 kDa; isoforms can be observed at ~110 kDa and ~30 kDa.



IHC testing of FFPE human testis tissue with Espin antibody. HIER: steam section in pH6 citrate buffer for 20 min and allow to cool prior to staining.



Flow cytometry testing of human HEK293 cells with Espin antibody; Blue=isotype control, Green= Espin antibody.

Description

ESPN is a multifunctional actin-bundling protein. It plays a major role in regulating the organization, dimensions, dynamics, and signaling capacities of the actin filament-rich, microvillus-type specializations that mediate sensory transduction in various mechanosensory and chemosensory cells.

Application Notes

The stated application concentrations are suggested starting points. Titration of the Espin antibody may be required due to differences in protocols and secondary/substrate sensitivity.

Immunogen

A portion of amino acids 17-45 from the human protein was used as the immunogen for the Espin antibody.

Storage

Aliquot the Espin antibody and store frozen at -20oC or colder. Avoid repeated freeze-thaw cycles.

