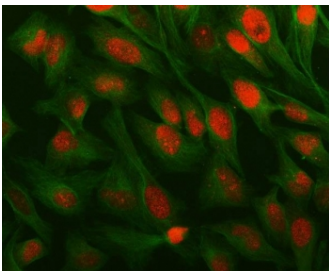


## ESO-3 Antibody / LAGE3 / ITBA2 (RQ8538)

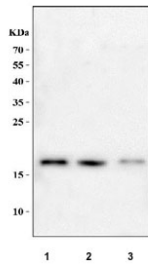
Catalog No.	Formulation	Size
RQ8538	0.5mg/ml if reconstituted with 0.2ml sterile DI water	100 ug

### Bulk quote request

<b>Availability</b>	1-3 days
<b>Species Reactivity</b>	Human
<b>Format</b>	Antigen affinity purified
<b>Host</b>	Rabbit
<b>Clonality</b>	Polyclonal (rabbit origin)
<b>Isotype</b>	Rabbit IgG
<b>Purity</b>	Antigen affinity purified
<b>Buffer</b>	Lyophilized from 1X PBS with 2% Trehalose
<b>UniProt</b>	Q14657
<b>Localization</b>	Nuclear, cytoplasmic
<b>Applications</b>	Western Blot : 0.5-1ug/ml Immunofluorescence : 5ug/ml ELISA : 0.1-0.5ug/ml
<b>Limitations</b>	This ESO-3 antibody is available for research use only.



Immunofluorescent staining of FFPE human HeLa cells with ESO-3 antibody (red) and Beta Tubulin mAb (green). HIER: steam section in pH6 citrate buffer for 20 min.



Western blot testing of human 1) MCF7, 2) 293T and 3) K562 cell lysate with ESO-3 antibody. Predicted molecular weight ~15 kDa.

## Description

This gene belongs to the ESO/LAGE gene family, members of which are clustered together on chromosome Xq28, and have similar exon-intron structures. Unlike the other family members which are normally expressed only in testis and activated in a wide range of human tumors, this gene is ubiquitously expressed in somatic tissues. The latter, combined with the finding that it is highly conserved in mouse and rat, suggests that the encoded protein is functionally important. An intronless pseudogene with high sequence similarity to this gene is located on chromosome 9.

## Application Notes

Optimal dilution of the ESO-3 antibody should be determined by the researcher.

## Immunogen

An E.coli-derived human recombinant protein (amino acids A40-R143) was used as the immunogen for the ESO-3 antibody.

## Storage

After reconstitution, the ESO-3 antibody can be stored for up to one month at 4°C. For long-term, aliquot and store at -20°C. Avoid repeated freezing and thawing.