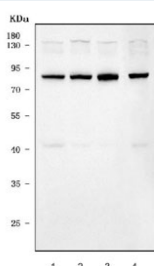


ERVW-1 Antibody / Syncytin-1 (R32357)

Catalog No.	Formulation	Size
R32357	0.5mg/ml if reconstituted with 0.2ml sterile DI water	100 ug

Bulk quote request

Availability	1-3 business days
Species Reactivity	Human
Format	Antigen affinity purified
Host	Rabbit
Clonality	Polyclonal (rabbit origin)
Isotype	Rabbit IgG
Purity	Antigen affinity
Buffer	Lyophilized from 1X PBS with 2% Trehalose and 0.025% sodium azide
UniProt	Q9UQF0
Applications	Western Blot : 0.5-1ug/ml
Limitations	This ERVW-1 antibody is available for research use only.



Western blot testing of human 1) HeLa, 2) K562, 3) SH-SY5Y and 4) MCF7 cell lysate with ERVW-1 antibody. Predicted molecular weight: 60~80 kDa depending on glycosylation level.

Description

ERVW-1 is also known as ERVWE1 and Syncytin-1. The human ERVWE1 locus is derived from a human endogenous retrovirus-W (HERV-W) provirus located on chromosome 7. This provirus has inactivating mutations in the gag and pol genes, but the envelope glycoprotein gene has been selectively preserved. The product of this gene, syncytin, is expressed in the placental syncytiotrophoblast and is involved in fusion of the cytotrophoblast cells to form the syncytial layer of the placenta. The protein has the characteristics of a typical retroviral envelope protein, including a furin cleavage site that separates the surface (SU) and transmembrane (TM) proteins which form a heterodimer.

Application Notes

Optimal dilution of the ERVW-1 antibody should be determined by the researcher.

Immunogen

Amino acids YYVNQSGIVTEKVKEIRDRIQRRAEELRNT of human ERVW-1 were used as the immunogen for the ERVW-1 antibody.

Storage

After reconstitution, the ERVW-1 antibody can be stored for up to one month at 4°C. For long-term, aliquot and store at -20°C. Avoid repeated freezing and thawing.