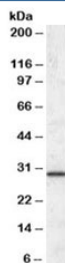


ERP29 Antibody (R33841)

Catalog No.	Formulation	Size
R33841-100UG	0.5 mg/ml in 1X TBS, pH7.3, with 0.5% BSA (US sourced) and 0.02% sodium azide	100 ug

[Bulk quote request](#)

Availability	1-3 business days
Species Reactivity	Human
Predicted Reactivity	Cow, Dog, Pig, Rat
Format	Antigen affinity purified
Host	Goat
Clonality	Polyclonal (goat origin)
Isotype	Goat Ig
Purity	Antigen affinity
Gene ID	10961
Applications	Western Blot : 0.1-0.3ug/ml ELISA (peptide) LOD : 1:2000
Limitations	This ERP29 antibody is available for research use only.



Western blot testing of human liver lysate with ERP29 antibody at 0.1ug/ml. Predicted molecular weight: ~29kDa.

Description

Additional name(s) for this target protein: Endoplasmic reticulum protein 29

Application Notes

Optimal dilution of the ERP29 antibody should be determined by the researcher.

1. This ERP29 antibody is specific for isoform 1 of the protein.

Immunogen

Amino acids EKNKMSDGKKEELQ were used as the immunogen for this ERP29 antibody.

Storage

Aliquot and store the ERP29 antibody at -20oC.