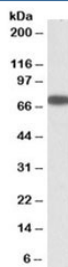


ERO1L Antibody (R35452)

Catalog No.	Formulation	Size
R35452-100UG	0.5 mg/ml in 1X TBS, pH7.3, with 0.5% BSA (US sourced) and 0.02% sodium azide	100 ug

[Bulk quote request](#)

Availability	1-3 business days
Species Reactivity	Human
Predicted Reactivity	Cow, Dog, Mouse, Pig, Rat
Format	Antigen affinity purified
Host	Goat
Clonality	Polyclonal (goat origin)
Isotype	Goat Ig
Purity	Antigen affinity
Gene ID	30001
Applications	Western Blot : 0.3-1ug/ml ELISA (peptide) LOD : 1:32000
Limitations	This ERO1L antibody is available for research use only.



Western blot testing of A431 lysate with ERO1L antibody at 0.3ug/ml. Predicted molecular weight: ~54/70kDa (unmodified/glycosylated).

Description

Additional name(s) for this target protein: Endoplasmic oxidoreductin-1-like protein, ERO1-like

Application Notes

Optimal dilution of the ERO1L antibody should be determined by the researcher.

Immunogen

Amino acids QSDEVDPGIKSASY were used as the immunogen for this ERO1L antibody.

Storage

Aliquot and store the ERO1L antibody at -20oC.