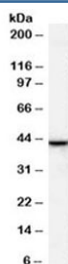


## ERLIN2 Antibody (R33729)

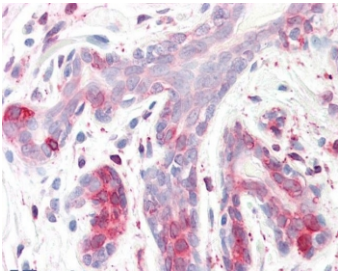
Catalog No.	Formulation	Size
R33729-100UG	0.5 mg/ml in 1X TBS, pH7.3, with 0.5% BSA (US sourced) and 0.02% sodium azide	100 ug

[Bulk quote request](#)

Availability	1-3 business days
Species Reactivity	Human
Predicted Reactivity	Rat
Format	Antigen affinity purified
Host	Goat
Clonality	Polyclonal (goat origin)
Isotype	Goat Ig
Purity	Antigen affinity
Gene ID	11160
Localization	Cytoplasmic (Endoplasmic reticulum)
Applications	Western Blot : 1-3ug/ml IHC (FFPE) : 3.75ug/ml ELISA (peptide) LOD : 1:2000
Limitations	This ERLIN2 antibody is available for research use only.



Western blot testing of human breast lysate with ERLIN2 antibody at 1ug/ml. Predicted molecular weight: ~38 kDa, routinely observed at ~43 kDa.



IHC testing of FFPE human breast tissue with ERLIN2 antibody at 3.75ug/ml. Required HIER: steamed antigen retrieval with pH6 citrate buffer; AP-staining.

## Description

Additional name(s) for this target protein: SPFH2, ER lipid raft associated 2

## Application Notes

Optimal dilution of the ERLIN2 antibody should be determined by the researcher.

1. This ERLIN2 antibody is specific for isoform 1.

## Immunogen

Amino acids EDEPLETATKEN were used as the immunogen for this ERLIN2 antibody.

## Storage

Aliquot and store the ERLIN2 antibody at -20oC.