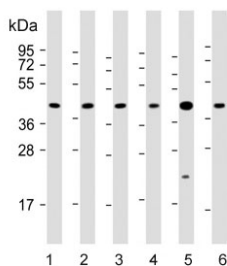


## ERLIN2 Antibody (F54725)

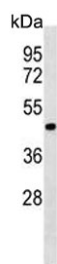
Catalog No.	Formulation	Size
F54725-0.4ML	In 1X PBS, pH 7.4, with 0.09% sodium azide	0.4 ml
F54725-0.08ML	In 1X PBS, pH 7.4, with 0.09% sodium azide	0.08 ml

[Bulk quote request](#)

<b>Availability</b>	1-3 business days
<b>Species Reactivity</b>	Human, Mouse, Rat
<b>Format</b>	Purified
<b>Host</b>	Rabbit
<b>Clonality</b>	Polyclonal (rabbit origin)
<b>Isotype</b>	Rabbit Ig
<b>Purity</b>	Antigen affinity purified
<b>UniProt</b>	O94905
<b>Applications</b>	Western Blot : 1:500-1:1000
<b>Limitations</b>	This ERLIN2 antibody is available for research use only.



Western blot testing of 1) human 293T, 2) human A431, 3) mouse C2C12, 4) mouse NIH 3T3, 5) human breast and 6) human placenta lysate with ERLIN2 antibody. Predicted molecular weight: ~38 kDa, routinely observed at ~43 kDa.



Western blot testing of human WiDr lysate with ERLIN2 antibody. Predicted molecular weight: ~38 kDa, routinely observed at ~43 kDa.

## Description

Component of the ERLIN1/ERLIN2 complex which mediates the endoplasmic reticulum-associated degradation (ERAD) of inositol 1,4,5-trisphosphate receptors (IP3Rs). Also involved in ITPR1 degradation by the ERAD pathway.

## Application Notes

The stated application concentrations are suggested starting points. Titration of the ERLIN2 antibody may be required due to differences in protocols and secondary/substrate sensitivity.

## Immunogen

A portion of amino acids 307-333 from the human protein was used as the immunogen for the ERLIN2 antibody.

## Storage

Aliquot the ERLIN2 antibody and store frozen at -20oC or colder. Avoid repeated freeze-thaw cycles.