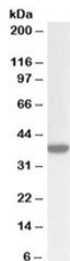


ERLIN1 Antibody (R33707)

Catalog No.	Formulation	Size
R33707-100UG	0.5 mg/ml in 1X TBS, pH7.3, with 0.5% BSA (US sourced) and 0.02% sodium azide	100 ug

[Bulk quote request](#)

Availability	1-3 business days
Species Reactivity	Human
Predicted Reactivity	Human
Format	Antigen affinity purified
Host	Goat
Clonality	Polyclonal (goat origin)
Isotype	Goat Ig
Purity	Antigen affinity
Gene ID	10613
Applications	Western Blot : 0.3-1ug/ml ELISA (peptide) LOD : 1:8000
Limitations	This ERLIN1 antibody is available for research use only.



Western blot testing of human placenta lysate with ERLIN1 antibody at 0.5ug/ml.
Predicted molecular weight: ~39kDa.

Description

Additional name(s) for this target protein: ER lipid raft associated 1

Application Notes

Optimal dilution of the ERLIN1 antibody should be determined by the researcher.

Immunogen

Amino acids EALEPSGENVIQNKE were used as the immunogen for this ERLIN1 antibody.

Storage

Aliquot and store the ERLIN1 antibody at -20oC.