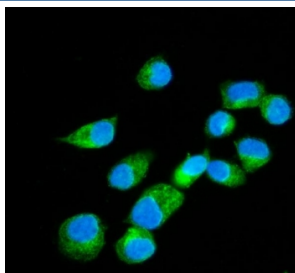


Erlin-2 Antibody (RQ6552)

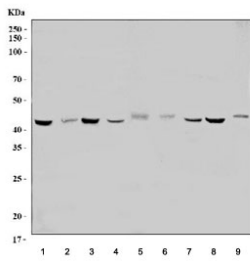
Catalog No.	Formulation	Size
RQ6552	0.5mg/ml if reconstituted with 0.2ml sterile DI water	100 ug

Bulk quote request

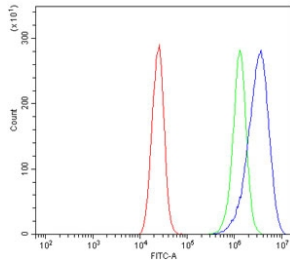
Availability	1-3 business days
Species Reactivity	Human, Mouse, Rat
Format	Antigen affinity purified
Host	Rabbit
Clonality	Polyclonal (rabbit origin)
Isotype	Rabbit IgG
Purity	Affinity purified
Buffer	Lyophilized from 1X PBS with 2% Trehalose
UniProt	O94905
Localization	Cytoplasmic
Applications	Western Blot : 1-2ug/ml Immunofluorescence : 5ug/ml Flow Cytometry : 1-3ug/million cells Direct ELISA : 0.1-0.5ug/ml
Limitations	This Erlin-2 antibody is available for research use only.



Immunofluorescent staining of FFPE human T-47D cells with Erlin-2 antibody (green) and DAPI nuclear stain (blue). HIER: steam section in pH6 citrate buffer for 20 min.



Western blot testing of 1) human HepG2, 2) human HeLa, 3) human T-47D, 4) human U-87 MG, 5) rat kidney, 6) rat testis, 7) rat liver, 8) mouse kidney and 9) mouse testis lysate with Erlin-2 antibody. Predicted molecular weight: ~38 kDa, routinely observed at ~43 kDa.



Flow cytometry testing of human Caco-2 cells with Erlin-2 antibody at 1ug/million cells (blocked with goat sera); Red=cells alone, Green=isotype control, Blue= Erlin-2 antibody.

Description

Erlin-2 is a protein that in humans is encoded by the ERLIN2 gene. This gene encodes a member of the SPFH domain-containing family of lipid raft-associated proteins. The encoded protein is localized to lipid rafts of the endoplasmic reticulum and plays a critical role in inositol 1,4,5-trisphosphate (IP3) signaling by mediating ER-associated degradation of activated IP3 receptors. Mutations in this gene are a cause of spastic paraplegia-18 (SPG18). Alternatively spliced transcript variants encoding multiple isoforms have been observed for this gene.

Application Notes

Optimal dilution of the Erlin-2 antibody should be determined by the researcher.

Immunogen

An E. coli-derived human protein (amino acids D87-N339) was used as the immunogen for the Erlin-2 antibody.

Storage

After reconstitution, the Erlin-2 antibody can be stored for up to one month at 4oC. For long-term, aliquot and store at -20oC. Avoid repeated freezing and thawing.