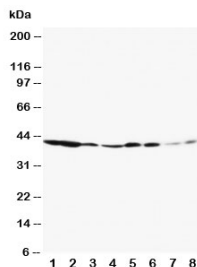


ERK1 Antibody / MAPK3 (R30409)

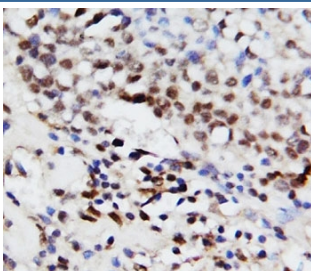
Catalog No.	Formulation	Size
R30409	0.5mg/ml if reconstituted with 0.2ml sterile DI water	100 ug

[Bulk quote request](#)

Availability	1-3 business days
Species Reactivity	Human, Mouse, Rat
Format	Antigen affinity purified
Host	Rabbit
Clonality	Polyclonal (rabbit origin)
Isotype	Rabbit IgG
Purity	Antigen affinity
Buffer	Lyophilized from 1X PBS with 2.5% BSA and 0.025% sodium azide/thimerosal
UniProt	P27361
Applications	Western Blot : 0.5-1ug/ml IHC (FFPE) : 0.5-1ug/ml Immunocytochemistry : 0.5-1ug/ml
Limitations	This ERK1 antibody is available for research use only.



ERK1 Antibody WB. Western blot testing of ERK1 antibody and Lane 1: rat spleen; 2: rat thymus; 3: rat skeletal muscle; 4: rat kidney; 5: HeLa; 6: Jurkat; 7: Raji; 8: COLO320. Predicted molecular weight: ~44 kDa.



ERK1 Antibody IHC. Immunohistochemistry staining of ERK1 antibody with human breast cancer tissue.

Description

ERK1 Antibody detects Mitogen-activated protein kinase 3, an enzyme that in humans is encoded by the MAPK3 gene. The protein encoded by this gene is a member of the MAP kinase family. MAP kinases, also known as extracellular signal-regulated kinases (ERKs), act in a signaling cascade that regulates various cellular processes such as proliferation, differentiation, and cell cycle progression in response to a variety of extracellular signals. This kinase is activated by upstream kinases, resulting in its translocation to the nucleus where it phosphorylates nuclear targets. Alternatively spliced transcript variants encoding different protein isoforms have been described. MAPK3 gene is mapped to human chromosome 16 by hybrid cell panel analysis.

HER2 signaling activates pathways such as PI3K-AKT and MAPK to regulate cell proliferation and survival; see our [HER2 antibody page](#) for upstream receptor detection. This antibody is part of a [broader antibody panel](#) offered by NSJ Bioreagents.

Application Notes

The stated application concentrations are suggested starting amounts. Titration of the ERK1 antibody may be required due to differences in protocols and secondary/substrate sensitivity.

Immunogen

An amino acid sequence from the middle region of human ERK1 (KTKVAWAKLFPKSDS) was used as the immunogen for this ERK1 antibody (100% homologous in human, mouse and rat).

Storage

After reconstitution, the ERK1 antibody can be stored for up to one month at 4oC. For long-term, aliquot and store at -20oC. Avoid repeated freezing and thawing.