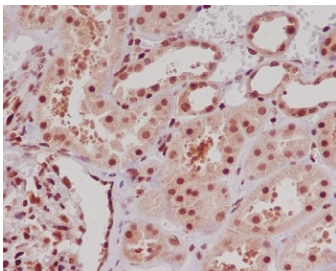


ERG Antibody / Transcriptional regulator ERG [clone ACH-5] (RQ5359)

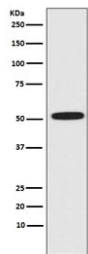
Catalog No.	Formulation	Size
RQ5359	Antibody in PBS with 0.02% sodium azide, 50% glycerol and 0.4-0.5mg/ml BSA	100 ul

[Bulk quote request](#)

Availability	1-2 weeks
Species Reactivity	Human, Mouse, Rat
Format	Purified
Host	Rabbit
Clonality	Rabbit Monoclonal
Isotype	Rabbit IgG
Clone Name	ACH-5
Purity	Affinity purified
UniProt	P11308
Localization	Nuclear, cytoplasmic
Applications	Western Blot : 1:500-1:2000 Immunohistochemistry (FFPE) : 1:50-1:200
Limitations	This ERG antibody is available for research use only.



IHC staining of FFPE human kidney tissue with ERG antibody. HIER: boil tissue sections in pH6, 10mM citrate buffer, for 10-20 min followed by cooling at RT for 20 min.



Western blot testing of human HeLa cell lysate with ERG antibody. Predicted molecular weight ~54 kDa.

Description

The ERG gene encodes a member of the erythroblast transformation-specific (ETS) family of transcription factors. All members of this family are key regulators of embryonic development, cell proliferation, differentiation, angiogenesis, inflammation, and apoptosis. The protein encoded by this gene is mainly expressed in the nucleus. It contains an ETS DNA-binding domain and a PNT (pointed) domain which is implicated in the self-association of chimeric oncoproteins. This protein is required for platelet adhesion to the subendothelium, inducing vascular cell remodeling. It also regulates hematopoiesis, and the differentiation and maturation of megakaryocytic cells. This gene is involved in chromosomal translocations, resulting in different fusion gene products, such as TMPSSR2-ERG and NDRG1-ERG in prostate cancer, EWS-ERG in Ewing's sarcoma and FUS-ERG in acute myeloid leukemia. More than two dozens of transcript variants generated from combinatorial usage of three alternative promoters and multiple alternative splicing events have been reported, but the full-length nature of many of these variants has not been determined. [RefSeq]

Application Notes

Optimal dilution of the ERG antibody should be determined by the researcher.

Immunogen

A synthetic peptide specific to human ERG / Transcriptional regulator ERG was used as the immunogen for the ERG antibody.

Storage

Store the ERG antibody at -20°C.