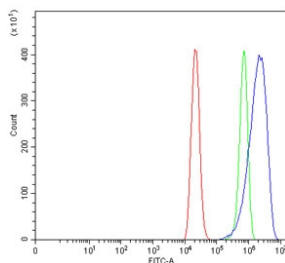


EREG1 Antibody / TRPM2 (RQ6967)

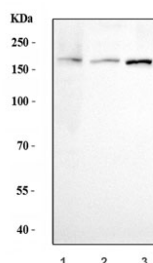
Catalog No.	Formulation	Size
RQ6967	0.5mg/ml if reconstituted with 0.2ml sterile DI water	100 ug

Bulk quote request

Availability	1-3 business days
Species Reactivity	Human, Mouse, Rat
Format	Antigen affinity purified
Host	Rabbit
Clonality	Polyclonal (rabbit origin)
Isotype	Rabbit IgG
Purity	Antigen affinity purified
Buffer	Lyophilized from 1X PBS with 2% Trehalose
UniProt	O94759
Applications	Western Blot : 0.5-1 ug/ml Flow Cytometry : 1-3ug/million cells Direct ELISA : 0.1-0.5ug/ml
Limitations	This EREG1 antibody is available for research use only.



Flow cytometry testing of human ThP-1 cells with EREG1 antibody at 1ug/million cells (blocked with goat sera); Red=cells alone, Green=isotype control, Blue= EREG1 antibody.



Western blot testing of 1) human HepG2, 2) rat brain and 3) mouse brain lysate with EREG1 antibody. Predicted molecular weight ~171 kDa.

Description

Transient receptor potential cation channel subfamily M member 2 (TRPM2), also known as Estrogen-responsive element-associated gene 1 (EREG1), is a protein that in humans is encoded by the TRPM2 gene. Using a cosmid/BAC contig, this gene is mapped to chromosome 21q22.3. The protein encoded by this gene is a calcium-permeable cation channel that is regulated by free intracellular ADP-ribose. The encoded protein is activated by oxidative stress and confers susceptibility to cell death. Several alternatively spliced transcript variants of this gene have been described, but their full-length nature is not known.

Application Notes

Optimal dilution of the EREG1 antibody should be determined by the researcher.

Immunogen

Recombinant human protein (amino acids R398-Y1503) was used as the immunogen for the EREG1 antibody.

Storage

After reconstitution, the EREG1 antibody can be stored for up to one month at 4°C. For long-term, aliquot and store at -20°C. Avoid repeated freezing and thawing.