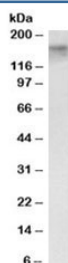


## ERCC6 Antibody (R35982)

Catalog No.	Formulation	Size
R35982-100UG	0.5 mg/ml in 1X TBS, pH7.3, with 0.5% BSA (US sourced) and 0.02% sodium azide	100 ug

[Bulk quote request](#)

Availability	1-3 business days
Species Reactivity	Human
Predicted Reactivity	Mouse, Rat, Dog, Pig, Cow
Format	Antigen affinity purified
Clonality	Polyclonal (goat origin)
Isotype	Goat Ig
Purity	Antigen affinity
Gene ID	2074
Localization	Nuclear
Applications	Western Blot : 0.3-1ug/ml ELISA (peptide) LOD : 1:128000
Limitations	This ERCC6 antibody is available for research use only.



Western blot testing of HeLa nuclear lysate with ERCC6 antibody at 0.3ug/ml.  
Predicted/observed molecular weight: ~168kDa.

## Description

Additional name(s) for this target protein: Excision repair cross-complementing rodent repair deficiency, complementation group 6

## Application Notes

Optimal dilution of the ERCC6 antibody should be determined by the researcher.

## **Immunogen**

Amino acids SNASPVQVKTAYKCA were used as the immunogen for this ERCC6 antibody.

## **Storage**

Aliquot and store the ERCC6 antibody at -20oC.