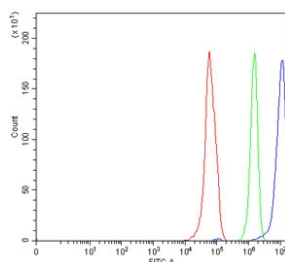


ERCC1 Antibody (RQ7076)

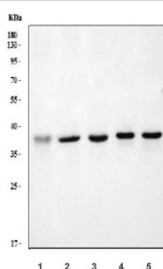
Catalog No.	Formulation	Size
RQ7076	0.5mg/ml if reconstituted with 0.2ml sterile DI water	100 ug

Bulk quote request

Availability	1-3 business days
Species Reactivity	Human
Format	Antigen affinity purified
Clonality	Polyclonal (rabbit origin)
Isotype	Rabbit IgG
Purity	Antigen affinity purified
Buffer	Lyophilized from 1X PBS with 2% Trehalose
UniProt	P07992
Applications	Western Blot : 0.5-1ug/ml Flow Cytometry : 1-3ug/million cells Direct ELISA : 0.1-0.5ug/ml
Limitations	This ERCC1 antibody is available for research use only.



Flow cytometry testing of human RT4 cells with ERCC1 antibody at 1ug/million cells (blocked with goat sera); Red=cells alone, Green=isotype control, Blue= ERCC1 antibody.



Western blot testing of human 1) MCF7, 2) HepG2, 3) HeLa, 4) U-87 MG and 5) A549 cell lysate with ERCC1 antibody. Predicted molecular weight ~36 kDa.

Description

DNA excision repair protein ERCC-1 is a protein that in humans is encoded by the ERCC1 gene. The product of this gene functions in the nucleotide excision repair pathway, and is required for the repair of DNA lesions such as those induced by UV light or formed by electrophilic compounds including cisplatin. The encoded protein forms a heterodimer with the XPF endonuclease (also known as ERCC4), and the heterodimeric endonuclease catalyzes the 5' incision in the process of excising the DNA lesion. The heterodimeric endonuclease is also involved in recombinational DNA repair and in the repair of inter-strand crosslinks. Mutations in this gene result in cerebrooculofacioskeletal syndrome, and polymorphisms that alter expression of this gene may play a role in carcinogenesis. Multiple transcript variants encoding different isoforms have been found for this gene. The last exon of this gene overlaps with the CD3e molecule, epsilon associated protein gene on the opposite strand.

Application Notes

Optimal dilution of the ERCC1 antibody should be determined by the researcher.

Immunogen

Recombinant human protein (amino acids K7-R283) was used as the immunogen for the ERCC1 antibody.

Storage

After reconstitution, the ERCC1 antibody can be stored for up to one month at 4oC. For long-term, aliquot and store at -20oC. Avoid repeated freezing and thawing.